

Clearing the way this winter



1500
lane kms
of roads



94
lane kms of
priority sidewalks



571
bus stops



402
cul-de-sacs



\$1.62 M
approximate budget



8
zones



Where's my plow

After the snow stops:

*Based on an average snow event of 10 cm

within
4 hours*

Arterial Roads

Roads like Fortune Drive, Columbia Street, and the Summit Connector carry the highest volume of traffic and are the first to receive attention. Our goal is to maintain bare wheel paths in one lane as long as possible during a snow event and to regain bare wheel paths within 4 hours after the snow stops.

within
16 hours*

Collectors & Bus Routes

Dallas Drive, Springhill Drive, and Ord Road are examples of roads that receive second priority clearing during and after snow events. Our goal is to maintain bare wheel paths in one lane as long as possible during a snow event and address these roads within 16 hours after the snow stops.

within
36 hours*

Residential Streets

Our goal is to sand or plow residential streets as necessary within 36 hours of the end of a snowfall. As long as snow continues to fall, City crews will continue to address arterial roads for emergency vehicles and most traffic before moving onto the lower priority roads.

Staffing & Equipment

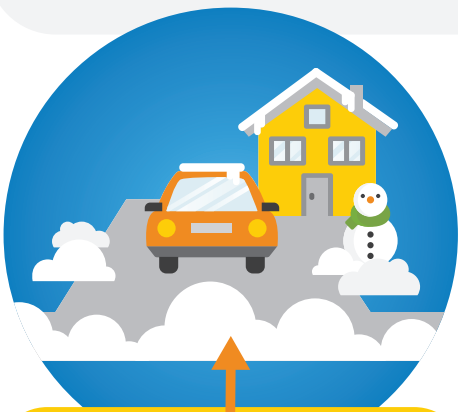
- 14 sand trucks with blades
- 2 liquid-dispersal trucks
- 2 graders
- 2 sidewalk plows
- 3 loaders - attachments include:
3 buckets, 2 loader plows, & 1 snowblower



Monday to Friday

(24-hour coverage): three 8-hour shifts of 10 people, with the ability to add staff from previous and upcoming shifts as required.

Weekends: two 12-hour shifts of a minimum of 8 staff are on standby throughout the season.



What is a 'windrow'?

A windrow is the snow left at the end of a driveway after a plow has cleared a road. Clearing windrows is the homeowners responsibility.



Cul-de-sac clearing

Cul-de-sacs require specialized procedures and equipment to clear. With 402 of them to attend to, they are often the last of residential streets to be cleared after a snow event.



Bus stop clearing

We clear 571 bus stops on a priority basis, starting with bus stops along arterials, collectors, and then residential streets.



Snow Angels

If you require assistance shovelling your property, Snow Angels is a program where neighbourhood-based volunteers are paired with seniors or residents with limited mobility who need snow removed from their pathways, stairs, sidewalks, and driveways.

Contact Volunteer Kamloops to register
250-372-8313 | VolunteerKamloops.org

Be a good neighbour, clear your sidewalk

It is the responsibility of property owners to clear snow from the sidewalk(s) adjacent to their property. On garbage collection days, clean an area or path where your garbage and recycling containers are picked up. Streets are easier to clear without parked cars, so please avoid parking on the streets.

Effective snow clearing tips:

- 1 Shovel snow to the right of your driveway (when facing the road) to minimize your windrow size.
- 2 Shovel snow closer to your house at the beginning of the season to allow for more snow storage later on.
- 3 DO NOT shovel snow onto the road. Ice builds up, creating a driving hazard.

Report an issue Call 250-828-3461

Please respect that our crews are working extremely hard and will get to your street when they can. Avoid calling in for the first 36 hours following a snow event.

