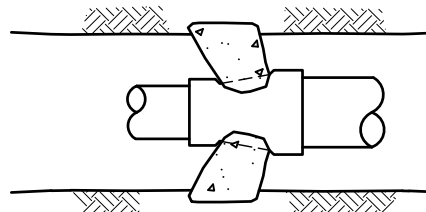
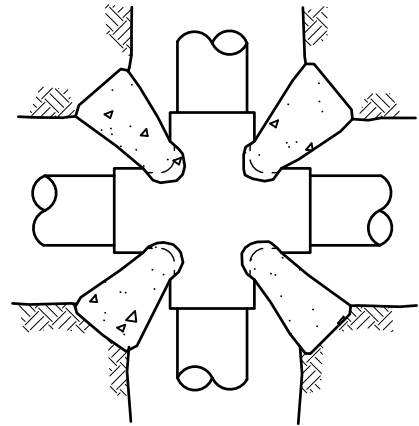


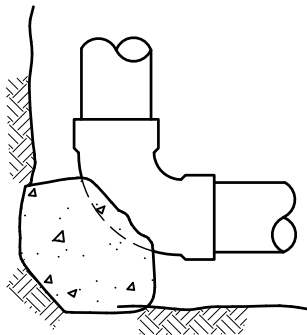
TEES



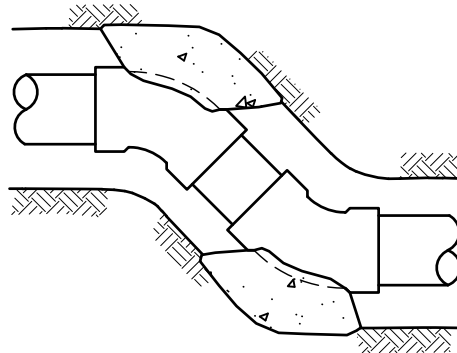
REDUCERS



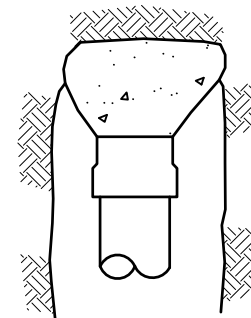
CROSSES



90° BENDS

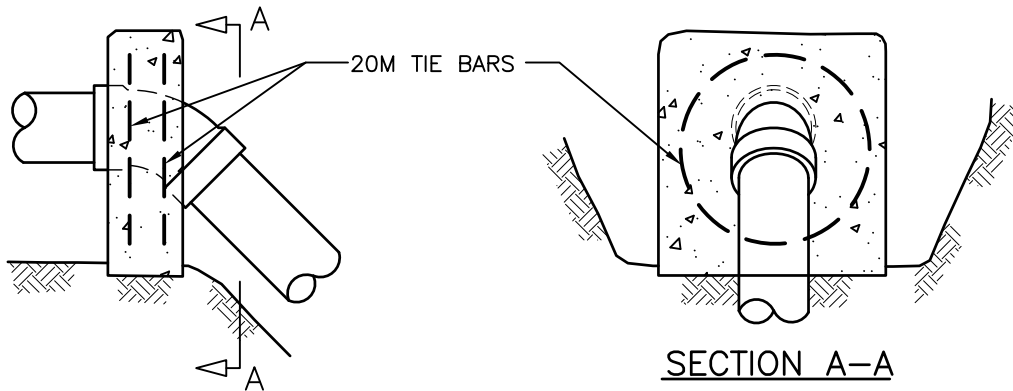


11 1/4°, 22 1/2°, 45° BENDS



CAPS

GENERAL ARRANGEMENT – PLAN VIEWS



VERTICAL BENDS

GENERAL ARRANGEMENT – ELEVATIONS

- NOTE:
1. REFER TO CONTRACT DRAWINGS FOR SPECIFIED BEARING AREAS OF THRUST BLOCKS AND/OR SPECIFIC REQUIREMENTS NOT SHOWN IN THIS DRAWING.
 2. PLACE 6 mil POLYETHYLENE ON INTERFACE BETWEEN CONCRETE AND FITTING.
 3. PLACE 20 MPa CONCRETE AGAINST UNDISTURBED GROUND; KEEP CONCRETE CLEAR OF FITTING JOINTS.
 4. REFER TO CONTRACT DRAWINGS, SECTIONS 33 11 01 AND 03 30 53 FOR DETAILED SPECIFICATIONS.
 5. REFER TO SW3 FOR VALVE THRUST BLOCK DETAILS.

NOT TO SCALE

TYPICAL THRUST BLOCK ARRANGEMENTS



| No. | DATE | REVISION DESCRIPTION | BY | APP |
|-----|---------|-------------------------|-----|-----|
| - | FEB2019 | REVIEWED AND ADDED 2019 | DAR | JDh |

DWG. No. REV. -
SW1