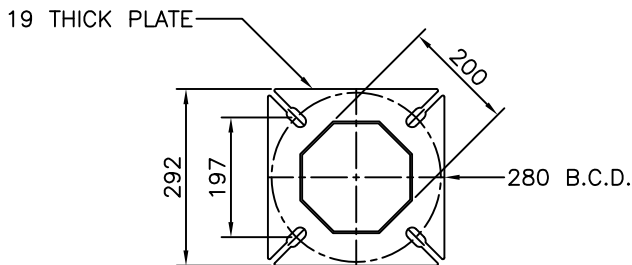




PARTS LIST	
PART	MASS (kg)
TYPE 4A SHAFT	66

* [] I.D. LABEL ON POLE



POLE BASE PLATE

NOTES:

1. REFER TO CONTRACT DRAWINGS AND SECTION 34 41 13 FOR DETAILED SPECIFICATIONS.
2. SEE DRAWING SE4.18 FOR TYPE 4A SHAFT, BOLT KITS AND POLE ASSEMBLY DETAILS.
3. ALL DIMENSIONS IN MILLIMETERS UNLESS OTHERWISE NOTED.

PLASTIC END CAP 120 A/F

SIGNAL HEAD (TYPICAL)

TYPE 4A SHAFT

200 A/F

POLE BASE PLATE

LARGE HANDHOLE

TYPE 4A SHAFT

4000

2500

**SIGNAL POSTS
TYPE 4A**

CITY OF KAMLOOPS

NO.	DATE	REVISION	DESCRIPTION	BY	APP
2	OCT 13		DIMENSION TO SIGNAL HEAD	DAR	SF
1	JAN 11		PLATINUM UPDATE	DAR	GC