

ELEVATION

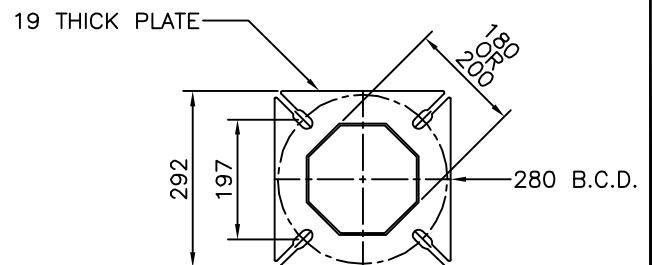
PARTS LIST

PART	MASS (kg)
TYPE [2(5)] SHAFT-5.0m	83
TYPE [2] SHAFT-4.1m FOR SERVICE BASE	71
TYPE [2(6.5)] SHAFT-6.5m	107
TYPE [2] SHAFT-5.6m FOR SERVICE BASE	90
TYPE [2(8.5)] SHAFT-8.5m	128
TYPE [2] SHAFT-7.6m FOR SERVICE BASE	116
TYPE [2A] LUMINAIRE ARM	35
TYPE [2C] LUMINAIRE ARM	65
TYPE 1 FLANGE COVER PLATE [1FCP]	1.5

* [] I.D. LABEL ON POLE

NOTES:

- REFER TO CONTRACT DRAWINGS AND SECTION 34 41 13 FOR DETAILED SPECIFICATIONS.
- SEE DRAWING E4.2 FOR TYPE 2 SHAFT, BOLT KITS AND POLE ASSEMBLY DETAILS.
- ALL DIMENSIONS IN MILLIMETERS UNLESS OTHERWISE NOTED.
- POLE SHAFTS TO BE SUPPLIED 0.9m SHORTER WHERE BEING INSTALLED ON SERVICE BASE.
- SINGLE PIECE POLE AND DAVIT UP TO 9.14m (30') TOTAL HEIGHT.
- FOR DOUBLE DAVIT USE FLANGED POLE ALL HEIGHTS.



POLE BASE PLATE

LUMINAIRE POLE (TYPE 2 SHAFT)

CITY OF KAMLOOPS

NO.	DATE	REVISION	DESCRIPTION	BY	APP
1	JAN 11	PLATINUM UPDATE		DAR	GC