

KAMPLAN: Through The Years

Sustainability, Quality Development and Design for the Tournament Capital of Canada

February 2014
Development and Engineering Services
City of Kamloops

1974

1979

1990

1997

2004



Let's Talk

KAMPLAN REVIEW & UPDATE
Call: 250-828-3568
Email: kamplan@kamloops.ca
Web: www.kamloops.ca/kamplan



Canada's Tournament Capital



KAMPLAN 2004

*Sustainability, quality development and design
for the Tournament Capital of Canada*

The population of Kamloops during this timeframe was 80,376 according to the 2006 Census.

Prior to the development of KAMPLAN 2004, the South Thompson Settlement Strategy was developed by the Thompson Nicola Regional District with participation from the City of Kamloops and other key stakeholders. It was adopted in May 2000.

The purpose of the South Thompson Settlement Strategy was to strike a balance between anticipated settlement pressures and the many other important values in the South Thompson Valley.

It was an important regional, comprehensive planning initiative which, even today, aims to:

- Protect the unique character and significance of the valley;
- Accommodate potential urban growth within the City of Kamloops and the Village of Chase;
- Integrate highway, utility corridor and settlement planning;
- Identify appropriate range and location of settlement opportunities;
- Balance environmental stewardship with economic activity;
- Establish appropriate levels of servicing;
- Identify and protect sensitive lands and resource values; and
- Protect and enhance water quality.

KAMPLAN 2004 was prepared through an extensive community consultation process, including direction from an Advisory Planning Committee and Technical Committee and meetings with major stakeholders in the community. Many of the policies and directions from KAMPLAN 1997 were still relevant and hence incorporated into KAMPLAN 2004.

While the last comprehensive review of KAMPLAN took place between 2001 and 2003, there have been several amendments since adoption in 2004. One of the more prominent amendments to KAMPLAN 2004 was the incorporation of the Sustainable Kamloops Plan: Foundations for Sustainability, adopted in 2010.

The purpose of the Sustainable Kamloops Plan was to adopt strategies and targets to reduce greenhouse gas emissions in accordance with the Local Government (Green Communities) Statutes Act. Additionally the Sustainable Kamloops Plan is a vision to address sustainability topics at the local level.

KAMPLAN 2004 builds on previous versions of KAMPLAN and has an increased focus on infill and intensification, making use of existing services and infrastructure. Policies are geared to encouraging a high standard of development and site design in private and public initiatives. Intensive Residential Design Guidelines were developed to promote sustainable infill opportunities.

Several secondary themed and neighbourhood plans and land use reports have been developed or revised since the adoption of KAMPLAN 2004 including:

- Social Plan (2008)
- Sustainable Kamloops Plan (2010)
- Bicycle Master Plan (2010)
- Industrial Land Review (2011)
- Transit Future Plan (2012)
- Parks Master Plan (2013)
- Pedestrian Master Plan (2013)
- Trails Master Plan (2013)
- Airshed Management Plan (2013)
- Agriculture Area Plan (2013)
- City Centre Plan (2005)
- Juniper West Plan (2007)
- Aberdeen Area Plan (2008)
- North Shore Neighbourhood Plan (2008)
- Tranquille on the Lake Neighbourhood Plan (2012)

These plans provide detailed policy information relative to a specific topic or neighbourhood supporting the generalized policies within KAMPLAN.

KAMPLAN 2004 saw the introduction of the 'Tournament Capital of Canada' brand and a focus on policies that aggressively promote and support this sport and physical activity-based concept.

A new Environmental Management System was implemented during this time period based on the need to develop an 'achievable and understandable long-term strategy using a consultative, balanced and integrated approach.'

The intent was to reduce the environmental impact of City operations and accelerate the adoption of more sustainable practices by Kamloops businesses, institutions, households and residents. The era also marked the construction of the membrane filtration water treatment plant, known today as the Kamloops Centre for Water Quality. Green building technology was used extensively in the construction of the plant to maximize efficiency, prevent pollution, and contribute to the sustainability of the community.

Several additional Development Permit Areas (DPA) were introduced in KAMPLAN 2004 to encourage good urban and building design and/or protect the natural environment, farming or against hazardous conditions including:

- North Shore Town Centre
- Campbell Creek Industrial Park
- McGill Corridor
- Notre Dame Drive
- Orchards Walk
- Juniper Corner
- Riparian Area (based on the Provincial Riparian Areas Regulation)
- Multi-family
- Site Specific Commercial and Industrial

The following is a summary of some of the main goals and policy directions of KAMPLAN 2004:

Growth Management:

A detailed section on future population growth distribution is included in KAMPLAN 2004.

Proposed Future Growth Pattern to 120,000 population horizon:

- 48% growth Southwest Sector
- 17% growth Central Core
- 11% growth Northeast Sector
- 13% growth Northwest Sector
- 11% growth Southeast Sector

More information on population growth management in Kamloops is provided in the background report on Growth Management.

Residential:

- Encourage infill, intensification and full utilization of existing service capacity prior to peripheral expansion
- Retain established neighbourhood character, amenities and quality while encouraging more diversity
- Policy on the siting of suites in the City is developed and included
- Policy on multi-family development is expanded
- A detailed section and policies on affordable housing is developed and included in the Plan to encourage development of more affordable housing units within the City

Commercial:

- Encourage a high standard of development to enhance the urban environment
- Encourage innovation and quality in design and development
- Establish a strong, diversified commercial base to provide employment and a high level of service to residents and visitors
- More detailed information is provided for each commercial designation and the 'sustainable commercial centres' concept is introduced

Industrial:

- Encourage industrial development as a means of expanding and diversifying the City's economy and tax base
- Encourage efficient utilization of existing services and serviced land
- Detailed information is included on each of the industrial areas within the City including the Southgate Industrial Park and Iron Mask Special Industrial Development Area
- Support establishment of increased employment generating industrial and commercial activity on the North Shore
- Work with Venture Kamloops on an ongoing basis to identify the needs of companies that may be interested in investing in Kamloops and outline strategies for meeting these needs

Agricultural/Resource Lands:

- Ensure that agricultural lands are preserved for agricultural purposes and to enhance the viability of agricultural operations in the City
- Discourage development into the Agricultural Land Reserve
- Encourage preservation of large tracts of land for grazing and ranching
- A wind turbine policy was added to promote alternative energy systems on larger tracts of agricultural land

Parks and Recreation:

- The Parks and Recreation section of KAMPLAN continues to be a major component of the Plan
- Ensure all citizens of Kamloops have adequate opportunities for personal growth in their leisure, thereby enriching the life of individuals and the community
- Support the development of a strong community image
- Aggressively promote the Tournament Capital of Canada strategy as a mechanism to enhance quality of life for all Kamloops residents

Community Facilities:

- Affordable housing, social services and declining school enrollment are key themes
- Support the senior governments' primary role in the delivery of health care, affordable housing and social support services

Heritage:

- Preserve, enhance and promote the community's cultural heritage for the benefit of residents and visitors alike

- Complete a heritage registry to identify and conserve the community's cultural heritage
- Work with the Kamloops Heritage Commission to develop a Heritage Strategic Plan

Police and Fire Protection:

- The application of 'CPTED' principles (Crime Prevention Through Environmental Design) is introduced
- Conduct a needs assessment on a regular basis to identify current policing and crime issues and potential strategies to address them

Social Planning:

- Recognize that senior levels of government have the primary responsibility for social services planning and programming
- Review and revise the Social Plan (2009) to ensure it continues to address social needs, social well-being and social development of the community
- The Social Plan categories which include Quality of Life, Education, Children and Youth, Employment, Health and Housing are described

Economic Development:

- A detailed section on the role of Venture Kamloops as the regional economic development agency is included in addition to an extensive policy section on economic development opportunities
- Develop a strong, diversified and sustainable economy that will provide expanded opportunities for employment, support community growth and foster community pride
- Strongly support and encourage employment generating development, particularly that which will not negatively impact the environment or community's image
- Aggressively support the Tournament Capital of Canada strategy as an economic development initiative
- Explore an assist factor for development cost charges on industrial zoned land
- Pursue a co-operative relationship with the Kamloops Indian Band to address matters of mutual concern

Municipal Infrastructure/Servicing:

- Infill over peripheral development is still encouraged along with more compact and efficient land use
- Develop demand management strategies to defer or reduce the costs of infrastructure growth

- Encourage water conservation
- Water systems will not be extended beyond existing services limits or the designated Special Development Areas for the term of the Plan in order to support redevelopment, intensification and infill development
- Construct a partial biological nutrient removal plant in accordance with the Liquid Waste Management Plan
- Work toward implementing surface runoff management methods
- Revise the Master Drainage Plan

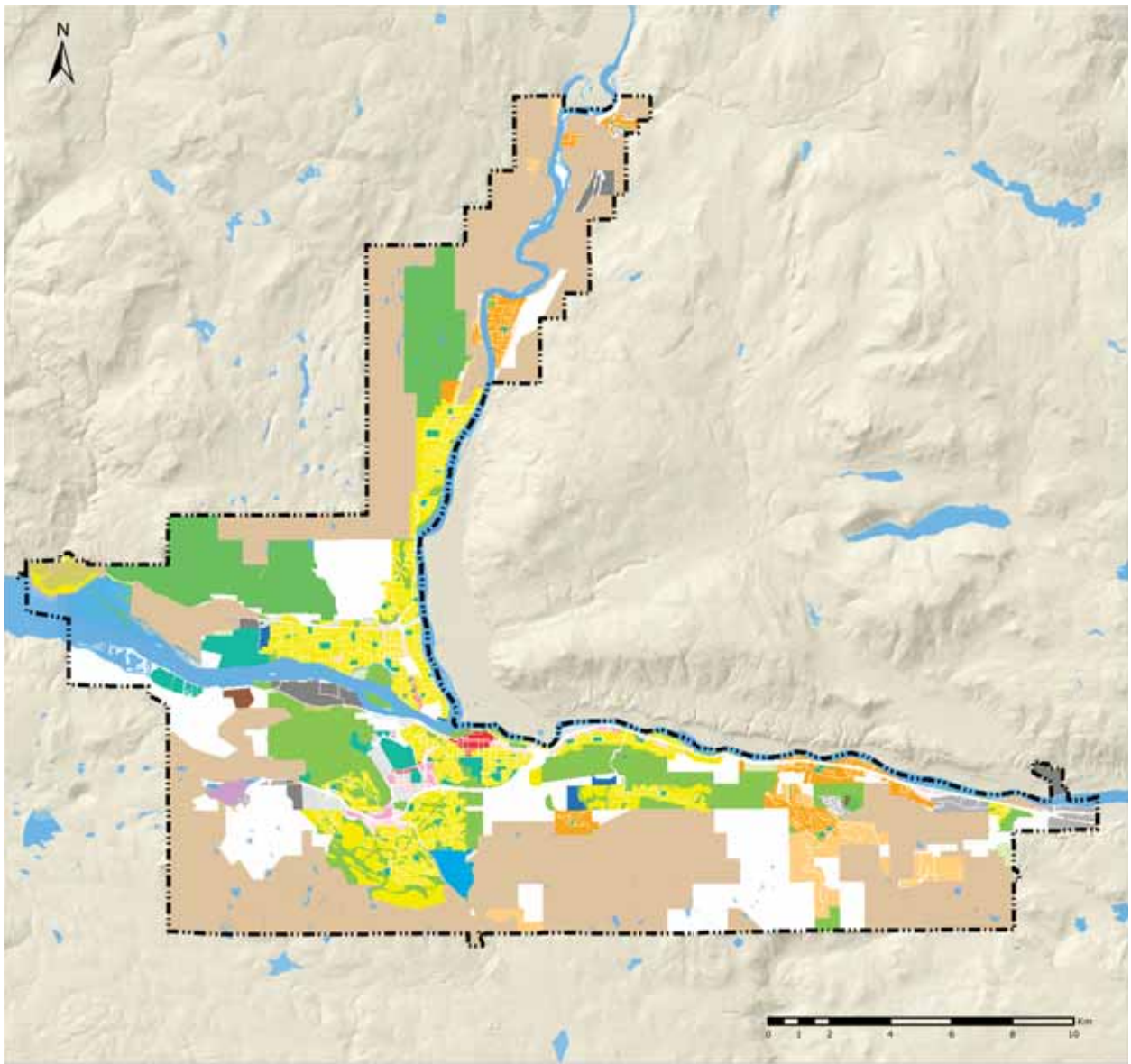
Transportation:

- A detailed section on transportation systems is included
- Develop an Access Management Plan within the term of this Plan
- Work with the Agricultural Land Commission to ensure any alignments made by the City within the Agricultural Land Reserve have been/are approved by the Commission
- Require transportation impact studies for signification development proposals
- Construction of the 6th Avenue extension from Columbia Street to Summit Drive at Springhill continues to be supported prior to reaching the 120,000 population horizon
- Alternative methods of transportation continue to be encouraged through a number of policies and secondary plans

Environment:

- Kamloops becomes one of 100 communities participating in the national Partners for Climate Protection program geared to the reduction of greenhouse gas emissions
- Take an active role in acquiring riverfront lands
- Implement a greenways planning process
- Improve air quality through the control and restriction of open burning and encouragement of public transit and alternative transportation methods
- Balance economic development and fiscal needs with the necessity to enhance the urban environment
- Consider the development of a Flood Plain Management Plan within the term of this Plan
- Environmentally Sensitive Areas are mapped based on information provided by the State of the Environment Report (1994), by the Endangered Spaces Project (1991), government agencies and community input
- Preserve and protect environmentally sensitive areas
- Incorporate environmentally sensitive area planning in future neighbourhood planning exercises
- Develop a Bear Aware Strategy

Generalized Land Use Map for the period of 2004-2036 is included below



- | | | |
|--------------------------|------------------------|-------------------------------------|
| ALR | Shopping Centre | Parkland and Open Space |
| Agricultural | Commercial | Golf Course |
| Rural | Light Industrial | Community Facility |
| Suburban | Medium Industrial | Special Development Area |
| Urban | Heavy Industrial | Special Industrial Development Area |
| City Centre | Sand/Gravel Extraction | Special Development Area - ALR |
| Tranquille Market Street | Sanitary Landfill Site | |
| Main Street | Provincial Park | |