

an open dialogue about the **future** of our community

KAMPLAN

REVIEW & UPDATE

KAMPLAN Review and Update



KAC Meeting
July 30, 2015
3:00 pm



OUTLINE

- Approval of Agenda & Previous Meeting Minutes
- Staff Progress Update
- Electronic Participation at Committee Meetings
- Hierarchy of Plans
- Defining Infill
- Break
- Historical Growth Trends/Future Projections
- Timeline Update
- Next Steps
- Roundtable
- Next Meeting



PROGRESS UPDATE

- New staff person
- Growth areas identified - previously committed/approved
- Growth rate analysis
- Future population growth analysis/projections per growth area and sector
- TWG and SWG meeting prep. and meetings
- RFP developed/advertised for Transportation Master Plan





ELECTRONIC PARTICIPATION @ MEETINGS

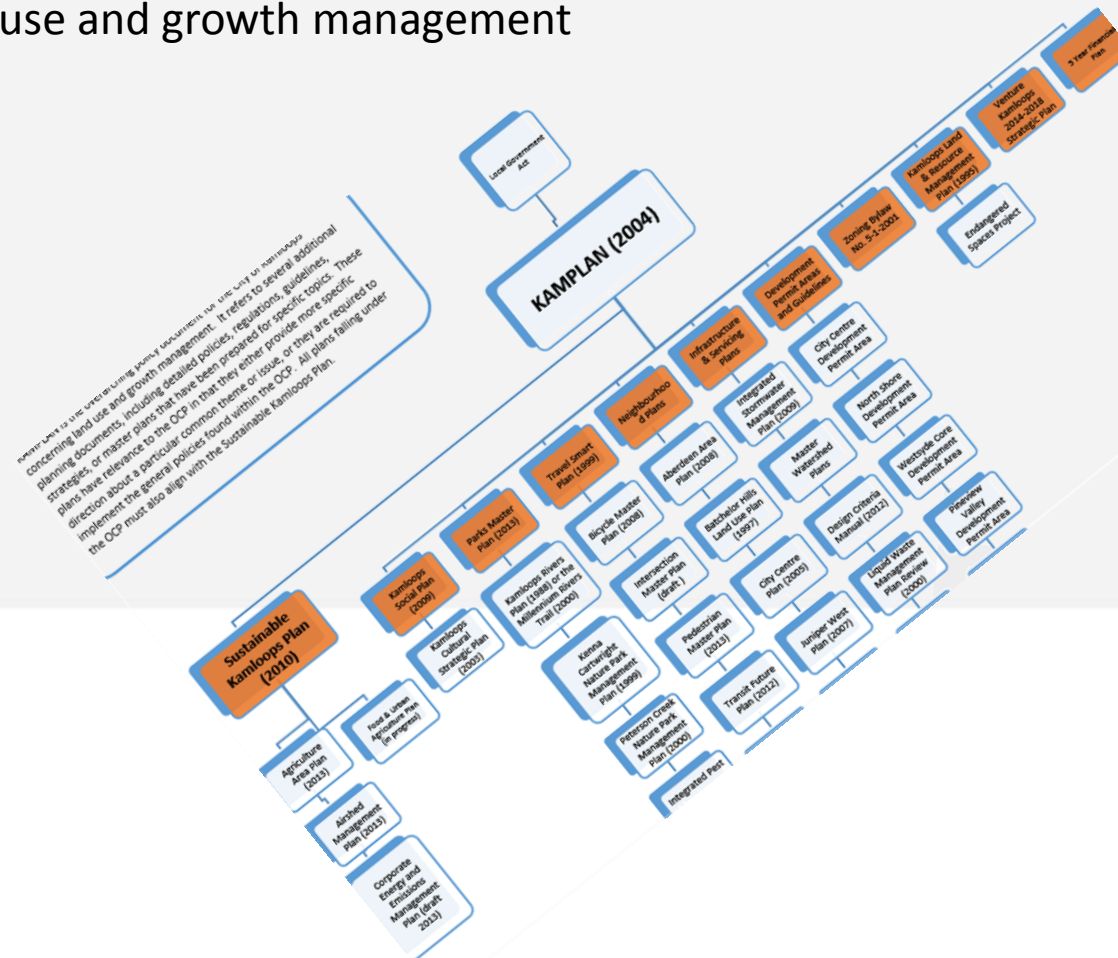


43A.1. A member of a Council committee who is unable to attend a committee meeting may participate by electronic means in accordance with Section 128 of the *Community Charter*, providing:


(see handout)

HIERARCHY OF PLANS (draft)

KAMPLAN is the overarching policy document for the City concerning land use and growth management



DEFINING INFILL FOR KAMPLAN

- SKP indicates  focus on infill, densification
- Currently no standard
- Input in Phase 1 reflects this as a public desire
- Starting point = infill defined across Kamloops
- KAMPLAN Staff, TWG and SWG results
- Activity!



INFILL ACTIVITY

The TWG and SWGs have narrowed down some suggestions for definitions on infill for KAMPLAN.

Next Steps:

- Solidify an infill definition(s) for Kamloops and associated criteria
- Map out infill opportunities across the City for KAMPLAN (high level guide)
- Infill Action Plan for KAMPLAN (high level)



INFILL ACTIVITY

But first, on behalf of the public or your respective agency:

- Choose which definition(s) you like the best.
- Are we missing anything based on Let's Talk Phase 1 input on infill?
- What words are unclear and need clarification?
- Any other comments?




HISTORICAL GROWTH TRENDS

AVE. GROWTH RATES:

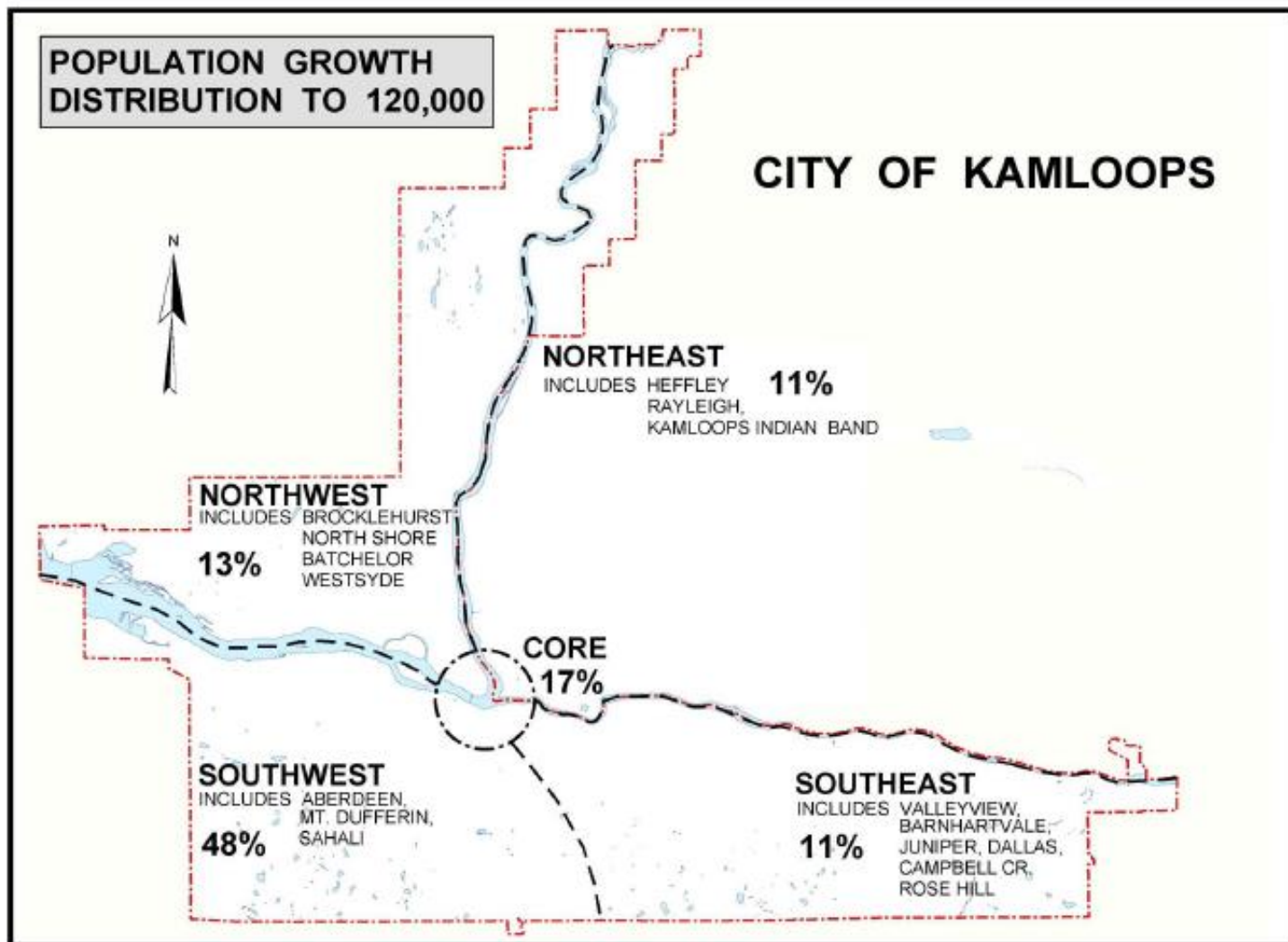
- Today (last 6 years) = 1.35%
- 12 yr = 0.7%
- 24 yr = 1.32%
- Sustainable Kamloops Plan (2010) contained 3 population growth scenarios (1%, 1.25% and 1.5% annually)
- KAMPLAN 2004 uses a 1.25% annual growth rate

GROWTH PROJECTIONS

So....

GROWTH RATE	100,000 pple by Yr...	120,000 pple by Yr...
HIGH (1.50%)	2022	2034
MED/HIGH (1.25%) 	2024	2038
MED (1.00%)	2026	2044
LOW (0.50%)	2037	2073

SECTOR DELINEATIONS



KAMPLAN 2004

REVIEW & UPDATE

WHERE ARE WE GOING?

Based on what we know now...

SECTOR	*KAMPLAN 2004	REALITY (2006-2011 Census Pop.)	PROJECTED (est. based on what we know/avail. areas)	PROJECTED (est. without FDs and SDAs)
CORE	17%	-6%	1%	3%
NE	11%	10%	4%	6%
NW	13%	43%	17%	11%
SE	11%	19%	18%	20%
SW	48%	34%	60%	60%

*Population growth to 120,000 pple

What does this mean when the SKP and public input say we should be focusing more on infill/densification?

OCP also states “long-term goal of a more compact, efficient and sustainable community...”



GROWTH TO 2036

Scenario Development:

- Status Quo – 2004 %s
- Infill Scenario – higher infill %s
- Balanced Scenario – greenfield/infill balanced %s

Evaluation:

- Transportation
- Servicing/Infrastructure
- Sustainability

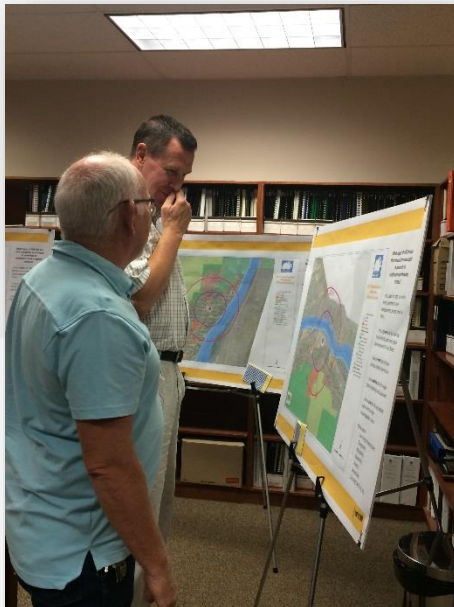
WHAT WILL WE DO NEXT?

- Develop 'Infill' definition for OCP based on internal feedback
- Evaluate the endorsed Growth Scenarios as well as the Status Quo scenario from a transportation perspective and others (i.e. servicing, sustainability)

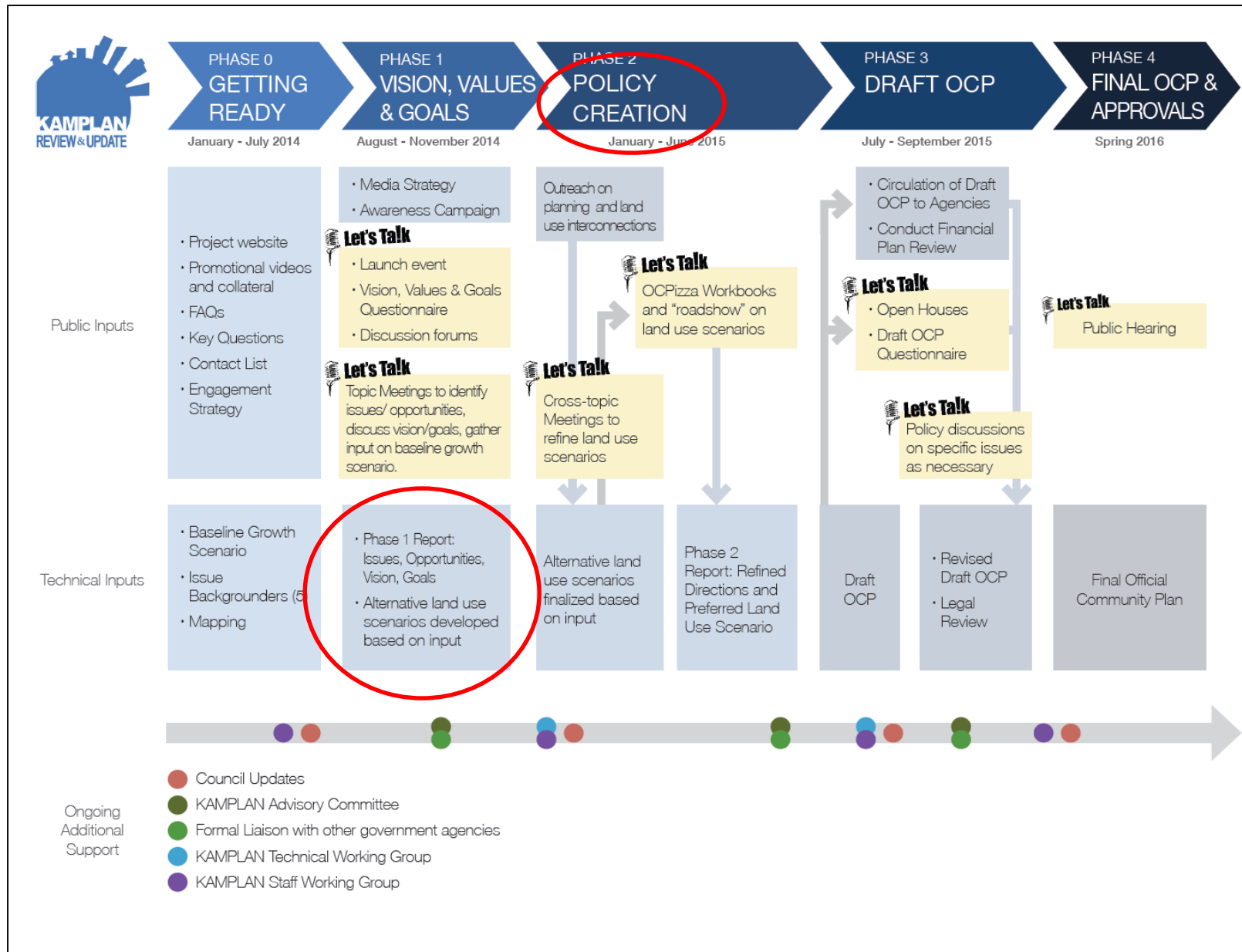


WHAT WILL WE DO NEXT?

- OCP goal and policy development/revision (ongoing)
- Prep. for Let's Talk Phase 2



WHERE ARE WE NOW? (handout)





- Roundtable
- Next Meeting – Late Fall/Early Winter

