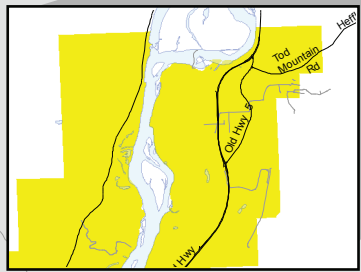






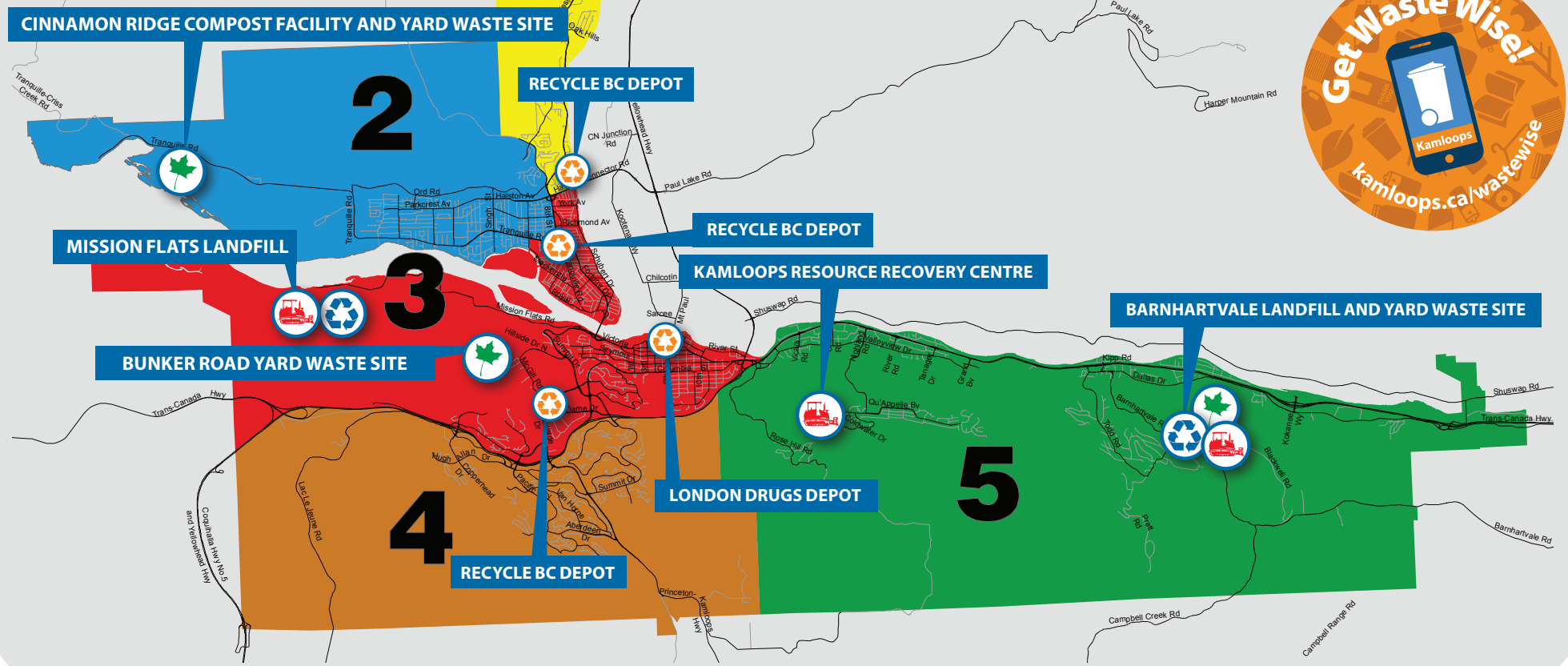


CITY OF KAMLOOPS ZONE BOUNDARIES



-  COMPOST OR YARD WASTE SITE
-  LANDFILL SITE
-  CITY RECYCLING DEPOT
-  RECYCLE BC DEPOT

- LEGEND**
-  ZONE 1
 -  ZONE 2
 -  ZONE 3
 -  ZONE 4
 -  ZONE 5



2020 SOLID WASTE COLLECTION SCHEDULE

ANNUAL COLLECTION DAYS AT A GLANCE

JANUARY

S	M	T	W	T	F	S
			1	2	3	4
5	6	7	8	9	10	11
12	13	14	15	16	17	18
19	20	21	22	23	24	25
26	27	28	29	30	31	

FEBRUARY

S	M	T	W	T	F	S
						1
2	3	4	5	6	7	8
9	10	11	12	13	14	15
16	17	18	19	20	21	22
23	24	25	26	27	28	29

MARCH

S	M	T	W	T	F	S
1	2	3	4	5	6	7
8	9	10	11	12	13	14
15	16	17	18	19	20	21
22	23	24	25	26	27	28
29	30	31				

APRIL

S	M	T	W	T	F	S
			1	2	3	4
5	6	7	8	9	10	11
12	13	14	15	16	17	18
19	20	21	22	23	24	25
26	27	28	29	30		

MAY

S	M	T	W	T	F	S
					1	2
3	4	5	6	7	8	9
10	11	12	13	14	15	16
17	18	19	20	21	22	23
24	25	26	27	28	29	30
31						

JUNE

S	M	T	W	T	F	S
	1	2	3	4	5	6
7	8	9	10	11	12	13
14	15	16	17	18	19	20
21	22	23	24	25	26	27
28	29	30				

JULY

S	M	T	W	T	F	S
			1	2	3	4
5	6	7	8	9	10	11
12	13	14	15	16	17	18
19	20	21	22	23	24	25
26	27	28	29	30	31	

AUGUST

S	M	T	W	T	F	S
						1
2	3	4	5	6	7	8
9	10	11	12	13	14	15
16	17	18	19	20	21	22
23	24	25	26	27	28	29
30	31					

SEPTEMBER

S	M	T	W	T	F	S
		1	2	3	4	5
6	7	8	9	10	11	12
13	14	15	16	17	18	19
20	21	22	23	24	25	26
27	28	29	30			

OCTOBER

S	M	T	W	T	F	S
				1	2	3
4	5	6	7	8	9	10
11	12	13	14	15	16	17
18	19	20	21	22	23	24
25	26	27	28	29	30	31

NOVEMBER

S	M	T	W	T	F	S
1	2	3	4	5	6	7
8	9	10	11	12	13	14
15	16	17	18	19	20	21
22	23	24	25	26	27	28
29	30					

DECEMBER

S	M	T	W	T	F	S
		1	2	3	4	5
6	7	8	9	10	11	12
13	14	15	16	17	18	19
20	21	22	23	24	25	26
27	28	29	30	31		



ZONE 1
ZONE 2
ZONE 3
ZONE 4
ZONE 5

WHAT DAY IS GARBAGE & RECYCLING DAY?

Calendar dates are colour coded to show which zone is scheduled for garbage and recycling pickup that day. Collection days advance one day after each statutory holiday.

Download the free Waste Wise Kamloops app to set reminders.



HELP US SERVE YOU BETTER



Place containers at the curb by **7:00 AM** on collection day.



During Bear Smart Season (Apr. 1–Nov. 30), set containers out after 4:00 am and properly manage bear attractants (Bylaw No. 40-59).



Container lids must be completely closed for pickup.



Break boxes into newspaper-sized pieces so they can fall loosely from containers into collection trucks.



Containers must be kept clean.



Secure all containers on private property on non-collection days.



Place containers in a safe location for collection, away from overhead obstacles (trees, basketball hoops, balconies), fences, and parked vehicles.



In the winter, place containers on the road side of snow piles and windrows.



Help improve collection efficiency by setting containers out for collection when they are at least half full.

Park It

Wheels against the curb or just off the roadway.



Point It

Arrows should point to centre of road.



Space It

Give at least an arm's length distance on all sides.



MOVING?

Containers are registered with the property address, so please do not take containers with you when you move. Container change requests are to be made by registered homeowners only.



FOR DAMAGED & MISSING CONTAINERS OR FOR MORE INFORMATION, PLEASE CALL:
250-828-3461