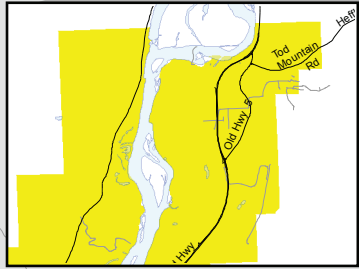


# CITY OF KAMLOOPS ZONE BOUNDARIES



## LEGEND



COMPOST OR YARD WASTE SITE



LANDFILL SITE

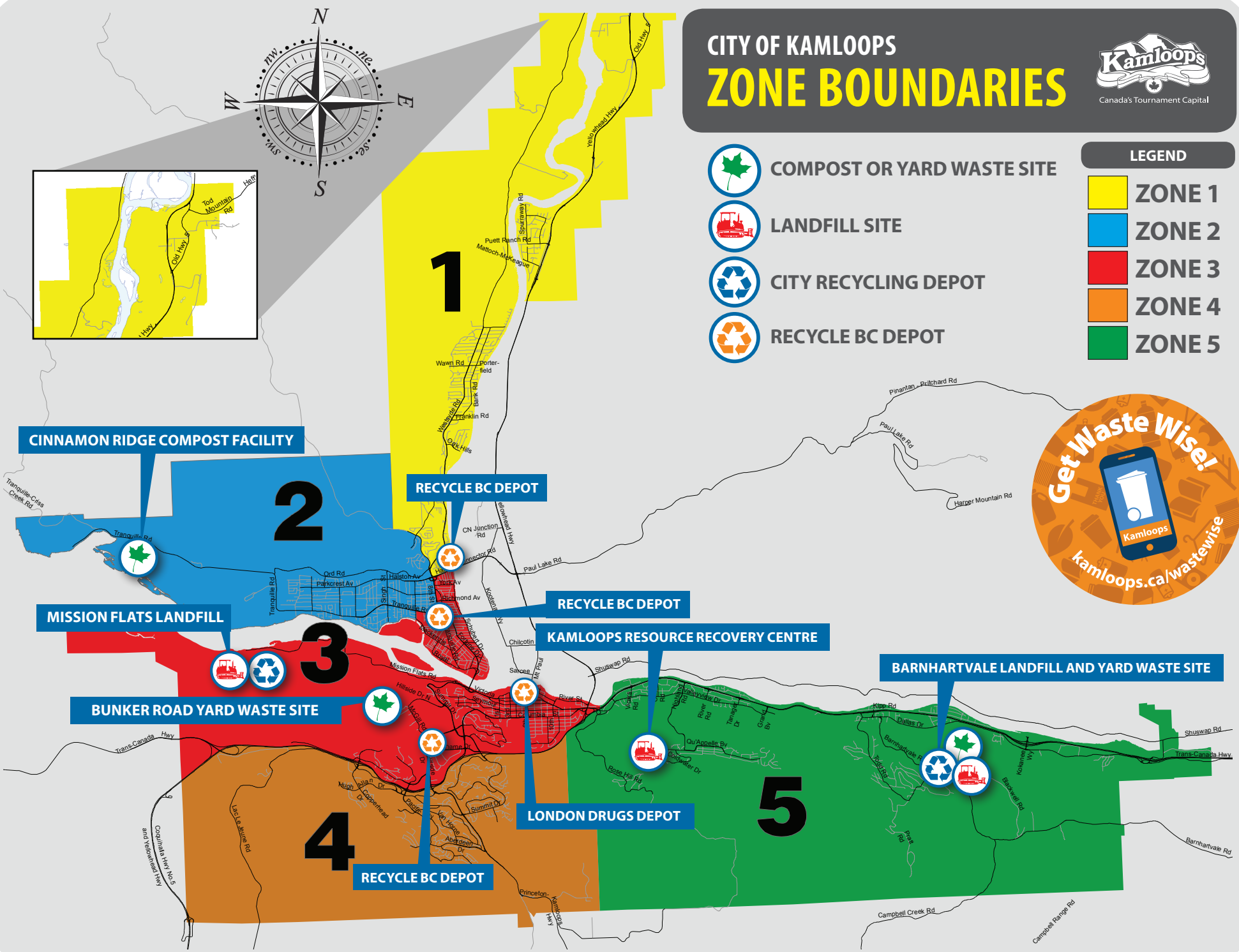


CITY RECYCLING DEPOT



RECYCLE BC DEPOT

- ZONE 1
- ZONE 2
- ZONE 3
- ZONE 4
- ZONE 5



**CINNAMON RIDGE COMPOST FACILITY**

**RECYCLE BC DEPOT**

**MISSION FLATS LANDFILL**

**RECYCLE BC DEPOT**

**KAMLOOPS RESOURCE RECOVERY CENTRE**

**BUNKER ROAD YARD WASTE SITE**

**BARNHARTVALE LANDFILL AND YARD WASTE SITE**

**RECYCLE BC DEPOT**

**LONDON DRUGS DEPOT**



# 2019 SOLID WASTE COLLECTION SCHEDULE

## ANNUAL COLLECTION DAYS AT A GLANCE

### JANUARY

Su	Mo	Tu	We	Th	Fr	Sa
		1	2	3	4	5
6	7	8	9	10	11	12
13	14	15	16	17	18	19
20	21	22	23	24	25	26
27	28	29	30	31		

### FEBRUARY

Su	Mo	Tu	We	Th	Fr	Sa
					1	2
3	4	5	6	7	8	9
10	11	12	13	14	15	16
17	18	19	20	21	22	23
24	25	26	27	28		

### MARCH

Su	Mo	Tu	We	Th	Fr	Sa
						1
2	3	4	5	6	7	8
9	10	11	12	13	14	15
16	17	18	19	20	21	22
23	24	25	26	27	28	29
30	31					

### APRIL

Su	Mo	Tu	We	Th	Fr	Sa
	1	2	3	4	5	6
7	8	9	10	11	12	13
14	15	16	17	18	19	20
21	22	23	24	25	26	27
28	29	30				

### MAY

Su	Mo	Tu	We	Th	Fr	Sa
			1	2	3	4
5	6	7	8	9	10	11
12	13	14	15	16	17	18
19	20	21	22	23	24	25
26	27	28	29	30	31	

### JUNE

Su	Mo	Tu	We	Th	Fr	Sa
						1
2	3	4	5	6	7	8
9	10	11	12	13	14	15
16	17	18	19	20	21	22
23	24	25	26	27	28	29
30						

### JULY

Su	Mo	Tu	We	Th	Fr	Sa
	1	2	3	4	5	6
7	8	9	10	11	12	13
14	15	16	17	18	19	20
21	22	23	24	25	26	27
28	29	30	31			

### AUGUST

Su	Mo	Tu	We	Th	Fr	Sa
				1	2	3
4	5	6	7	8	9	10
11	12	13	14	15	16	17
18	19	20	21	22	23	24
25	26	27	28	29	30	31

### SEPTEMBER

Su	Mo	Tu	We	Th	Fr	Sa
1	2	3	4	5	6	7
8	9	10	11	12	13	14
15	16	17	18	19	20	21
22	23	24	25	26	27	28
29	30					

### OCTOBER

Su	Mo	Tu	We	Th	Fr	Sa
		1	2	3	4	5
6	7	8	9	10	11	12
13	14	15	16	17	18	19
20	21	22	23	24	25	26
27	28	29	30	31		

### NOVEMBER

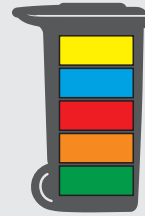
Su	Mo	Tu	We	Th	Fr	Sa
					1	2
3	4	5	6	7	8	9
10	11	12	13	14	15	16
17	18	19	20	21	22	23
24	25	26	27	28	29	30

### DECEMBER

Su	Mo	Tu	We	Th	Fr	Sa
1	2	3	4	5	6	7
8	9	10	11	12	13	14
15	16	17	18	19	20	21
22	23	24	25	26	27	28
29	30	31				

## MOVING?

Containers are registered with the property address, so please do not take containers with you when you move. Container change requests are to be made by registered homeowners only.



ZONE 1  
ZONE 2  
ZONE 3  
ZONE 4  
ZONE 5

## WHAT DAY IS GARBAGE & RECYCLING DAY?

Calendar dates are colour coded to show which zone is scheduled for garbage and recycling pickup that day. Collection days advance one day after each statutory holiday.

*Download the free Waste Wise Kamloops app to set reminders.*



## HELP US SERVE YOU BETTER



Place containers at the curb by **7:00 AM** on collection day.



During Bear Smart Season (Apr.1–Nov.30), set containers out after 4:00 am and properly manage bear attractants (Bylaw No. 40-59).



Container lids must be completely closed for pickup.



Break down boxes and make sure material can fall loosely from containers during collection.



Containers must be kept clean.



Secure all containers on private property on non-collection days.



Place containers in a safe location for collection, away from overhead obstacles (trees, basketball hoops, balconies), fences, and parked vehicles.



In the winter, place containers on the road side of snow piles and windrows.

Help improve collection efficiency by setting containers out for collection when they are at least half full.

## Park It

Wheels against the curb or just off the roadway.



## Point It

Arrows should point to centre of road.



## Space It

Give at least an arm's length distance on all sides.



FOR DAMAGED & MISSING CONTAINERS OR FOR MORE INFORMATION, PLEASE CALL:

**250-828-3461**