

SUBDIVISION PLAN OF LOT 1 DISTRICT LOT D GROUP 2 KAMLOOPS DIVISION YALE (FORMERLY LYTTON) DISTRICT PLAN EPP70511

PLAN EPP93009

BCGS 921.069



ALL DISTANCES ARE IN METRES AND DECIMALS THEREOF

THE INTENDED PLOT SIZE OF THIS PLAN IS 864 mm IN WIDTH BY 560 mm IN HEIGHT (D-SIZE) WHEN PLOTTED AT A SCALE OF 1:250

LEGEND:

INTEGRATED SURVEY AREA No. 23 (MUNICIPALITY OF KAMLOOPS) NAD 83 (CSRS) 4.0.0.BC.1. UTM ZONE 10

GRID BEARINGS ARE DERIVED FROM OBSERVATIONS BETWEEN GEODETIC CONTROL MONUMENTS 83H5997 AND 83H5975.

THE UTM COORDINATES AND ESTIMATED ABSOLUTE ACCURACY ACHIEVED ARE DERIVED FROM THE MASCOOT PUBLISHED COORDINATES AND STANDARD DEVIATIONS FOR GEODETIC CONTROL MONUMENTS 83H5997 AND 83H5975.

THIS PLAN SHOWS HORIZONTAL GROUND-LEVEL DISTANCES UNLESS OTHERWISE SPECIFIED. TO COMPUTE GRID DISTANCES, MULTIPLY GROUND-LEVEL DISTANCES BY THE AVERAGE COMBINED FACTOR OF 0.9999738 WHICH HAS BEEN DERIVED FROM GEODETIC CONTROL MONUMENTS 83H5997 AND 83H5975.

SYMBOLS	DESCRIPTION
FOUND PLACED	
	CONTROL MONUMENT
	STANDARD IRON POST
	NON-STANDARD IRON POST
	DENOTES NOTHING FOUND
	DENOTES WITNESS
	DENOTES UNREGISTERED
	DENOTES ESTIMATED ABSOLUTE ACCURACY

NOTE: THIS PLAN SHOWS ONE OR MORE WITNESS POSTS WHICH ARE NOT SET ON THE TRUE CORNER(S).

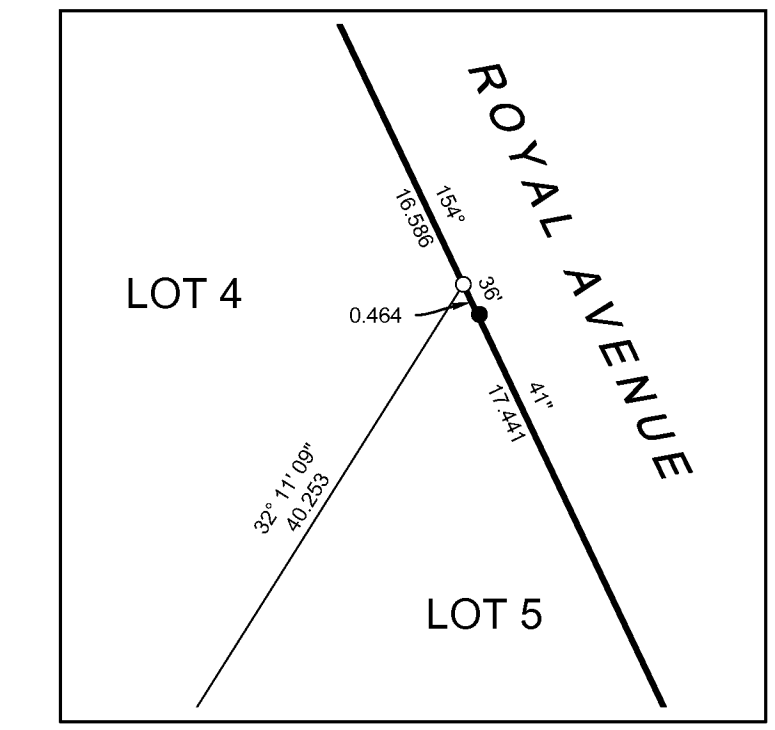
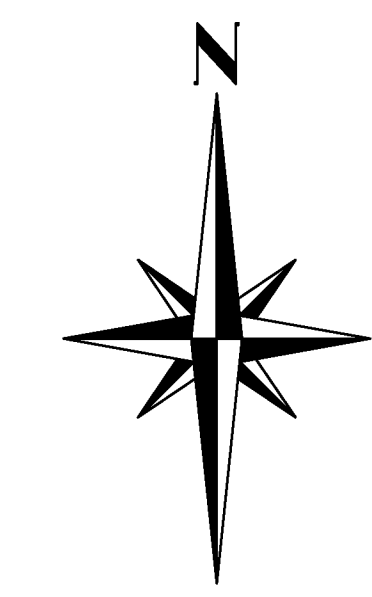
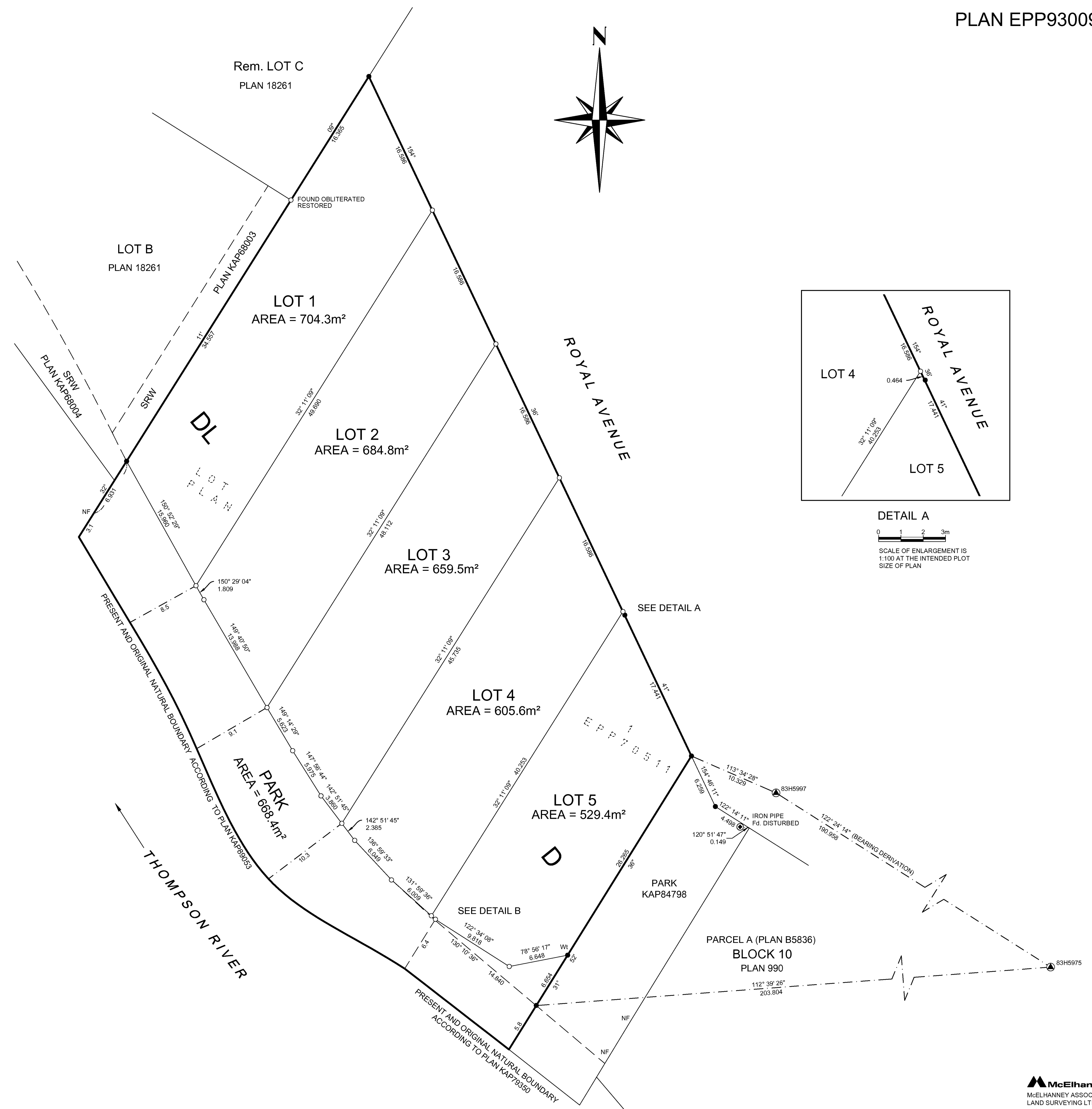
SOME LINWORK AND POSTS ARE EXAGGERATED FOR CLARITY.

THIS PLAN LIES WITHIN THE THOMPSON-NICOLA REGIONAL DISTRICT.

THIS PLAN LIES WITHIN THE JURISDICTION OF THE APPROVING OFFICER FOR THE CITY OF KAMLOOPS.

GEOREFERENCING POSITIONS DATUM: NAD83(CSRS) 4.0.0.BC.1. UTM ZONE 10

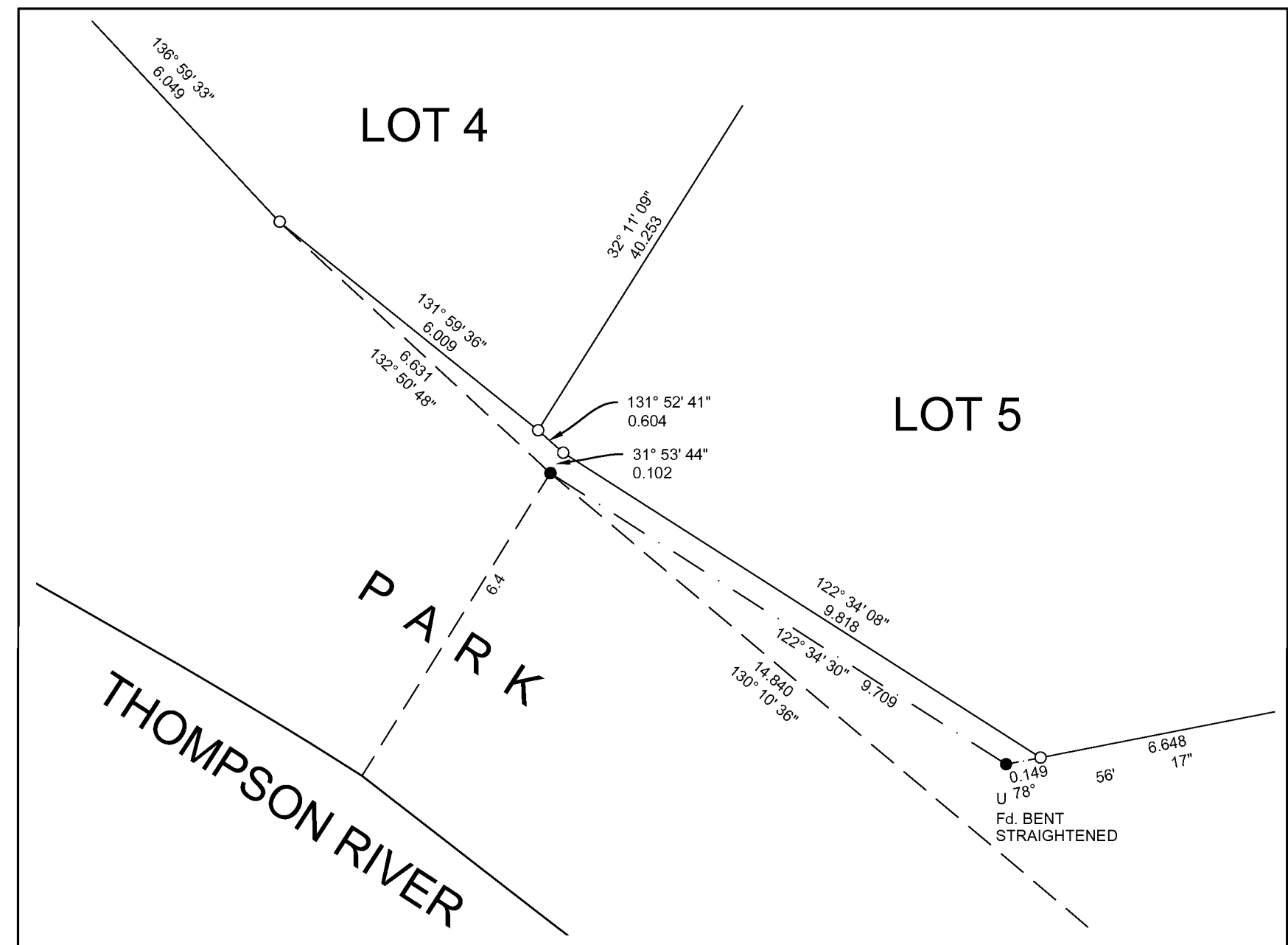
POINT NAME	NORTHING	EASTING	EAA
83H5997	5618554.41	686058.94	0.05
83H5975	5618452.09	686220.16	0.05



DETAIL A



SCALE OF ENLARGEMENT IS 1:100 AT THE INTENDED PLOT SIZE OF PLAN



DETAIL B



SCALE OF ENLARGEMENT IS 1:100 AT THE INTENDED PLOT SIZE OF PLAN

THE FIELD SURVEY REPRESENTED BY THIS PLAN WAS COMPLETED ON THE 9th DAY OF SEPTEMBER, 2021. THOMAS P. DUNKLEY, BCLS 1002

McElhanney
 McELHANNEY ASSOCIATES
 LAND SURVEYING LTD.
 710 Laval Crescent
 Kamloops BC
 Canada V2C 5P3
 Tel 250 374 2200

FILE NO. 2431-5001-05
 DRAWING NO. 5001-05-03.DWG