

**STATUTORY RIGHT OF WAY PLAN OVER LOTS 1 TO 5 INCLUSIVE  
DISTRICT LOT D GROUP 2 KAMLOOPS DIVISION YALE (FORMERLY  
LYTTON) DISTRICT PLAN EPP93009**

PURSUANT TO SECTION 113 OF THE LAND TITLE ACT.  
BCGS 921.069

PLAN EPP93067



ALL DISTANCES ARE IN METRES AND DECIMALS THEREOF  
THE INTENDED PLOT SIZE OF THIS PLAN IS 864 mm IN WIDTH BY  
560 mm IN HEIGHT (D-SIZE) WHEN PLOTTED AT A SCALE OF 1:250

**LEGEND:**

INTEGRATED SURVEY AREA No. 23 (MUNICIPALITY OF KAMLOOPS) NAD 83 (CSRS) 4.0.0.BC.1. UTM ZONE 10

GRID BEARINGS ARE DERIVED FROM OBSERVATIONS BETWEEN GEODETIC CONTROL MONUMENTS  
83H5997 AND 83H5975.

THE UTM COORDINATES AND ESTIMATED ABSOLUTE ACCURACY ACHIEVED ARE DERIVED FROM THE  
MASCOT PUBLISHED COORDINATES AND STANDARD DEVIATIONS FOR GEODETIC CONTROL MONUMENTS  
83H5997 AND 83H5975.

THIS PLAN SHOWS HORIZONTAL GROUND-LEVEL DISTANCES UNLESS OTHERWISE SPECIFIED. TO  
COMPUTE GRID DISTANCES, MULTIPLY GROUND-LEVEL DISTANCES BY THE AVERAGE  
COMBINED FACTOR OF 0.9999738 WHICH HAS BEEN DERIVED FROM GEODETIC CONTROL MONUMENTS  
83H5997 AND 83H5975.

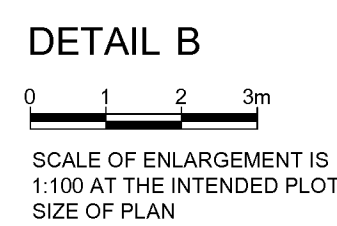
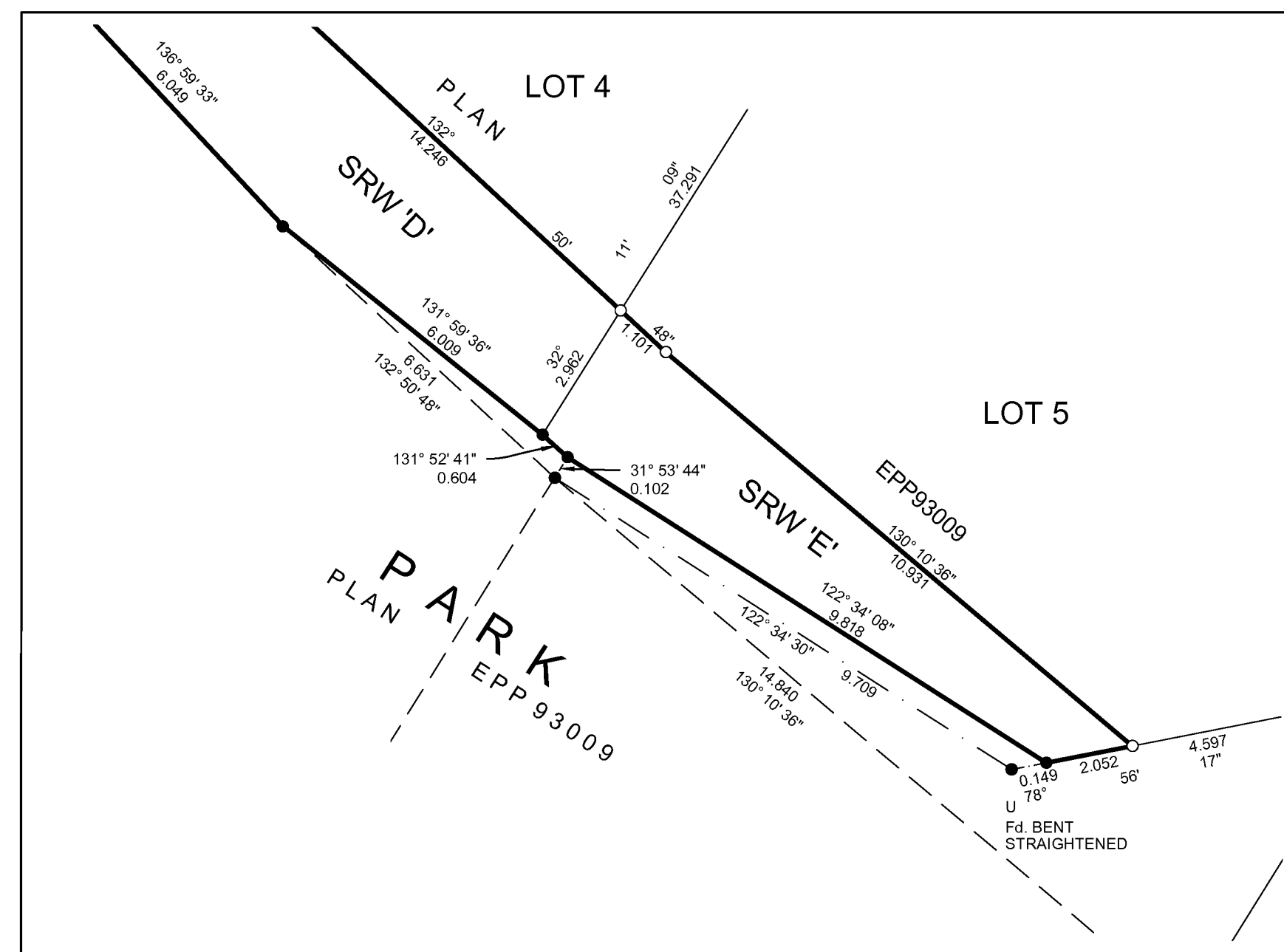
SYMBOLS	DESCRIPTION
●	CONTROL MONUMENT
○	STANDARD IRON POST
⊙	NON-STANDARD IRON POST
NF	DENOTES NOTHING FOUND
U	DENOTES UNREGISTERED
Wt	DENOTES WITNESS
EAA	DENOTES ESTIMATED ABSOLUTE ACCURACY

NOTE:  
THIS PLAN SHOWS ONE OR MORE WITNESS POSTS WHICH ARE NOT SET ON THE TRUE CORNER(S).  
SOME LINEWORK AND POSTS ARE EXAGGERATED FOR CLARITY.

THIS PLAN LIES WITHIN THE THOMPSON-NICOLA REGIONAL DISTRICT.

GEOREFERENCING POSITIONS			
DATUM: NAD83(CSRS) 4.0.0.BC.1. UTM ZONE 10			
POINT NAME	NORTHING	EASTING	EAA
83H5997	5618554.41	686058.94	0.05
83H5975	5618452.09	686220.16	0.05

BOOK OF REFERENCE		
STATUTORY RIGHT OF WAY	DESCRIPTION	AREA REQUIRED
SRW 'A'	LOT 1 DISTRICT LOT D GROUP 2 KDYD PLAN EPP93009	46.3m <sup>2</sup>
SRW 'B'	LOT 2 DISTRICT LOT D GROUP 2 KDYD PLAN EPP93009	53.1m <sup>2</sup>
SRW 'C'	LOT 3 DISTRICT LOT D GROUP 2 KDYD PLAN EPP93009	34.2m <sup>2</sup>
SRW 'D'	LOT 4 DISTRICT LOT D GROUP 2 KDYD PLAN EPP93009	39.7m <sup>2</sup>
SRW 'E'	LOT 5 DISTRICT LOT D GROUP 2 KDYD PLAN EPP93009	25.3m <sup>2</sup>
TOTAL		198.6m <sup>2</sup>



THE FIELD SURVEY REPRESENTED BY THIS PLAN  
WAS COMPLETED ON THE 8TH DAY OF NOVEMBER, 2021.  
THOMAS P. DUNKLEY, BCLS 1002

