

REFERENCE PLAN OF PARTS OF LOTS 1 TO 5 INCLUSIVE DISTRICT LOT D GROUP 2 KAMLOOPS DIVISION YALE (FORMERLY LYTTON) DISTRICT PLAN EPP93009

PURSUANT TO SECTION 99(1)(e) OF THE LAND TITLE ACT.
FOR COVENANT PURPOSES

BCGS 921.069



THE INTENDED PLOT SIZE OF THIS PLAN IS 864 mm IN WIDTH BY 580 mm IN HEIGHT (D-SIZE) WHEN PLOTTED AT A SCALE OF 1:250

LEGEND:

INTEGRATED SURVEY AREA No. 23 (MUNICIPALITY OF KAMLOOPS) NAD 83 (CSRS) 4.0.0.BC.1. UTM ZONE 10

GRID BEARINGS ARE DERIVED FROM OBSERVATIONS BETWEEN GEODETIC CONTROL MONUMENTS 83H5997 AND 83H5975.

THE UTM COORDINATES AND ESTIMATED ABSOLUTE ACCURACY ACHIEVED ARE DERIVED FROM THE MASCOT PUBLISHED COORDINATES AND STANDARD DEVIATIONS FOR GEODETIC CONTROL MONUMENTS 83H5997 AND 83H5975.

THIS PLAN SHOWS HORIZONTAL GROUND-LEVEL DISTANCES UNLESS OTHERWISE SPECIFIED. TO COMPUTE GRID DISTANCES, MULTIPLY GROUND-LEVEL DISTANCES BY THE AVERAGE COMBINED FACTOR OF 0.9999738 WHICH HAS BEEN DERIVED FROM GEODETIC CONTROL MONUMENTS 83H5997 AND 83H5975.

SYMBOLS DESCRIPTION

FOUND	PLACED	DESCRIPTION
●	○	CONTROL MONUMENT
●	○	STANDARD IRON POST
●	○	NON-STANDARD IRON POST
NF		DENOTES NOTHING FOUND
Wt		DENOTES WITNESS
U		DENOTES UNREGISTERED
EAA		DENOTES ESTIMATED ABSOLUTE ACCURACY

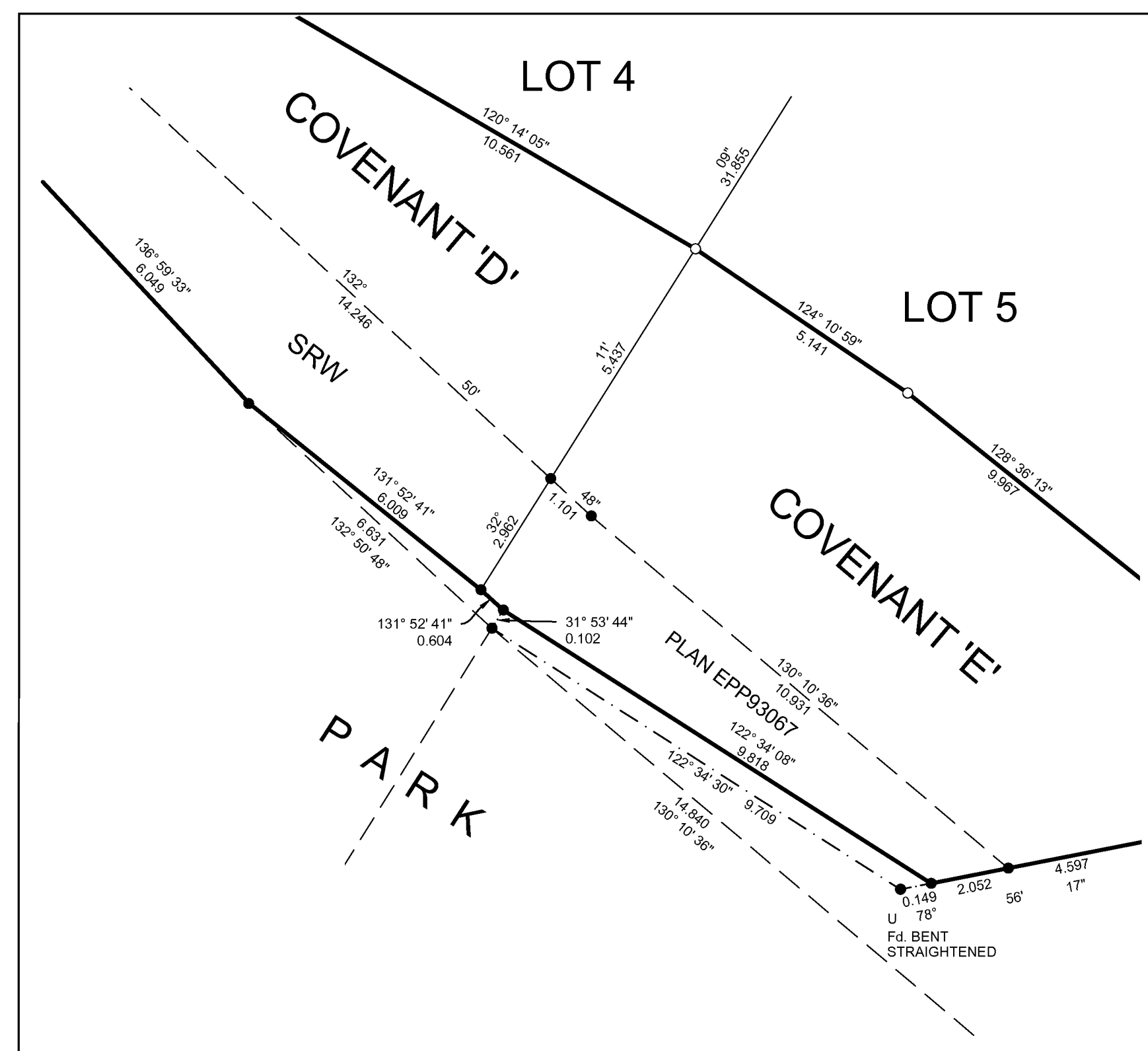
NOTE: THIS PLAN SHOWS ONE OR MORE WITNESS POSTS WHICH ARE NOT SET ON THE TRUE CORNER(S).

SOME LINEWORK AND POSTS ARE EXAGGERATED FOR CLARITY.

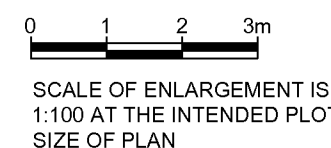
THIS PLAN LIES WITHIN THE THOMPSON-NICOLA REGIONAL DISTRICT.

BOOK OF REFERENCE		
COVENANT	DESCRIPTION	AREA REQUIRED
COVENANT 'A'	LOT 1 DISTRICT LOT D GROUP 2 KDYD PLAN EPP93009	99.9m ²
COVENANT 'B'	LOT 2 DISTRICT LOT D GROUP 2 KDYD PLAN EPP93009	102.7m ²
COVENANT 'C'	LOT 3 DISTRICT LOT D GROUP 2 KDYD PLAN EPP93009	82.6m ²
COVENANT 'D'	LOT 4 DISTRICT LOT D GROUP 2 KDYD PLAN EPP93009	94.7m ²
COVENANT 'E'	LOT 5 DISTRICT LOT D GROUP 2 KDYD PLAN EPP93009	111.2m ²
TOTAL		491.1m ²

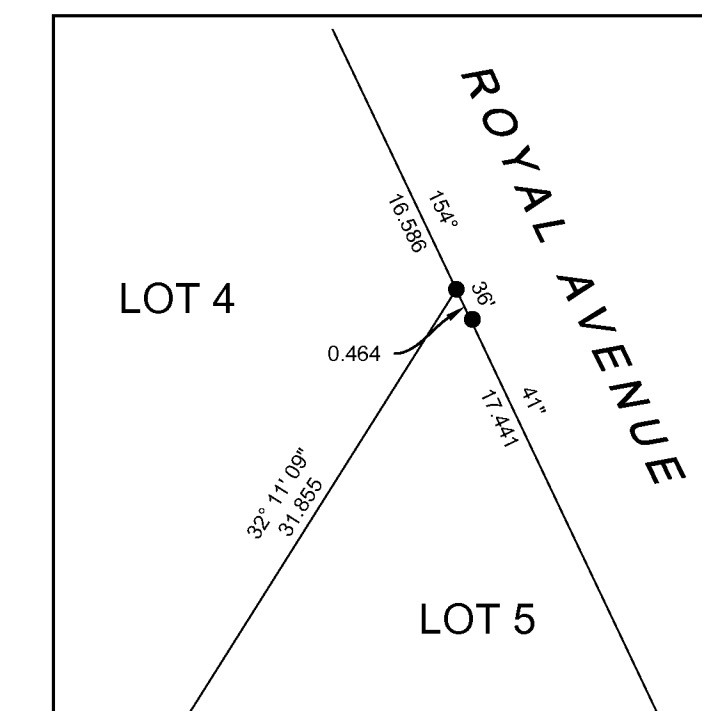
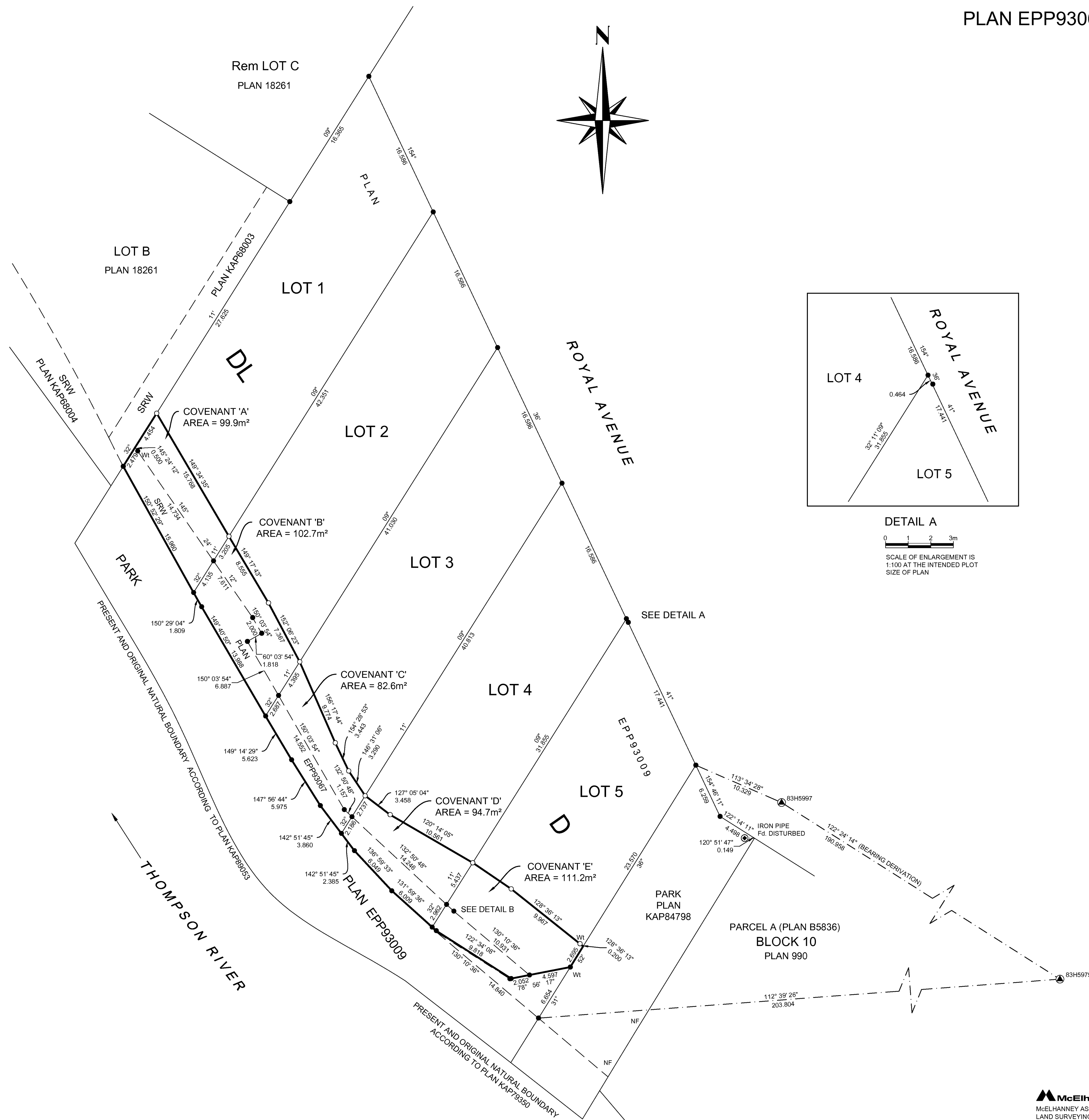
GEOREFERENCING POSITIONS			
DATUM: NAD83(CSRS) 4.0.0.BC.1. UTM ZONE 10			
POINT NAME	NORTHING	EASTING	EAA
83H5997	5618554.41	686058.94	0.05
83H5975	5618452.09	686220.16	0.05



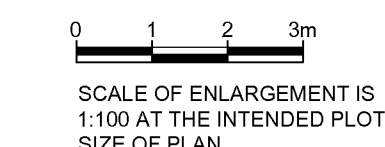
DETAIL B



THE FIELD SURVEY REPRESENTED BY THIS PLAN WAS COMPLETED ON THE 8th DAY OF NOVEMBER, 2021. THOMAS P. DUNKLEY, BCLS 1002



DETAIL A



McElhanney
MCELHANNEY ASSOCIATES
LAND SURVEYING LTD.
710 Laval Crescent
Kamloops BC
Canada V2C 5P3
Tel 250 374 2200

FILE NO. 2431-5001-05
DRAWING NO. 5001-05-05-R1.DWG