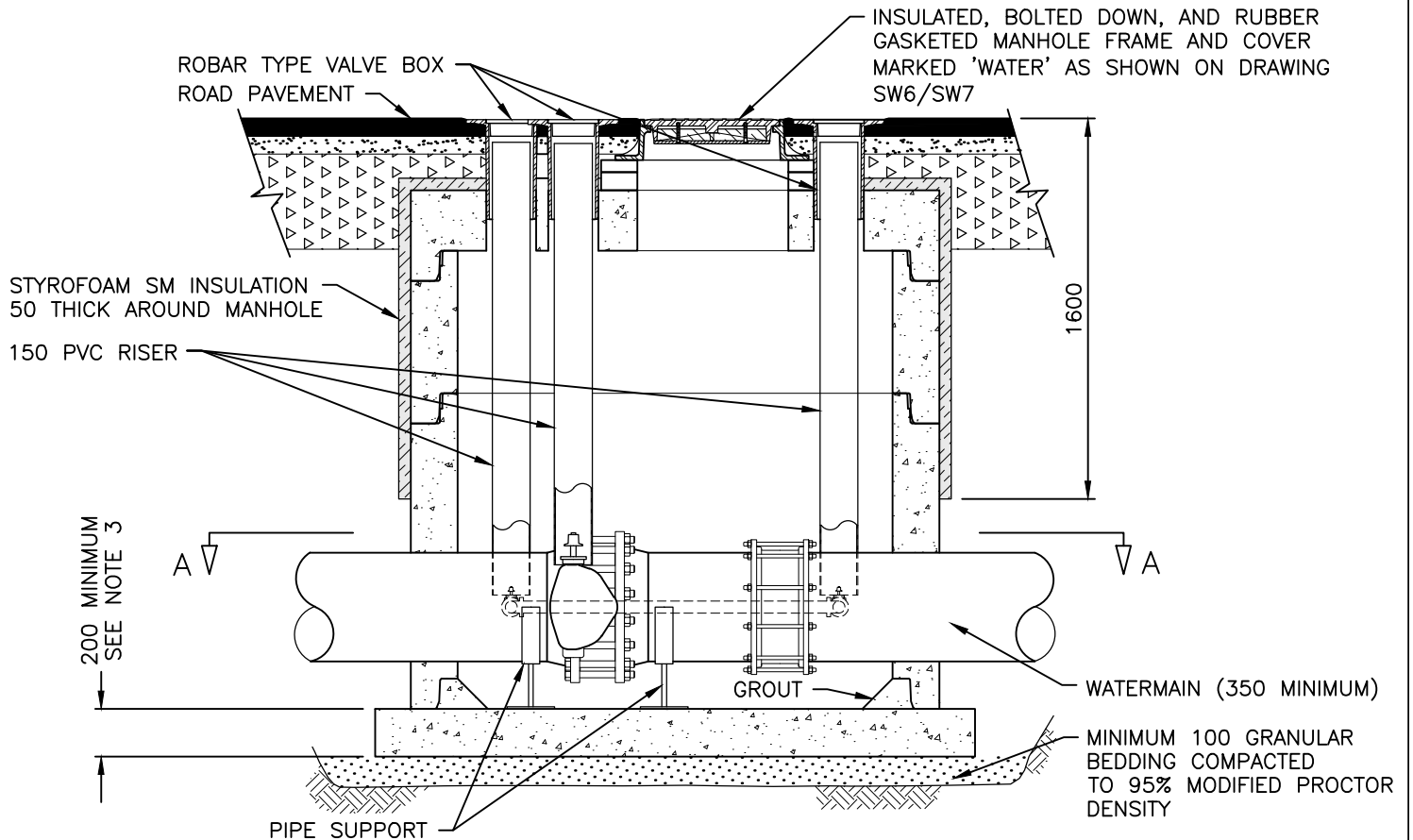
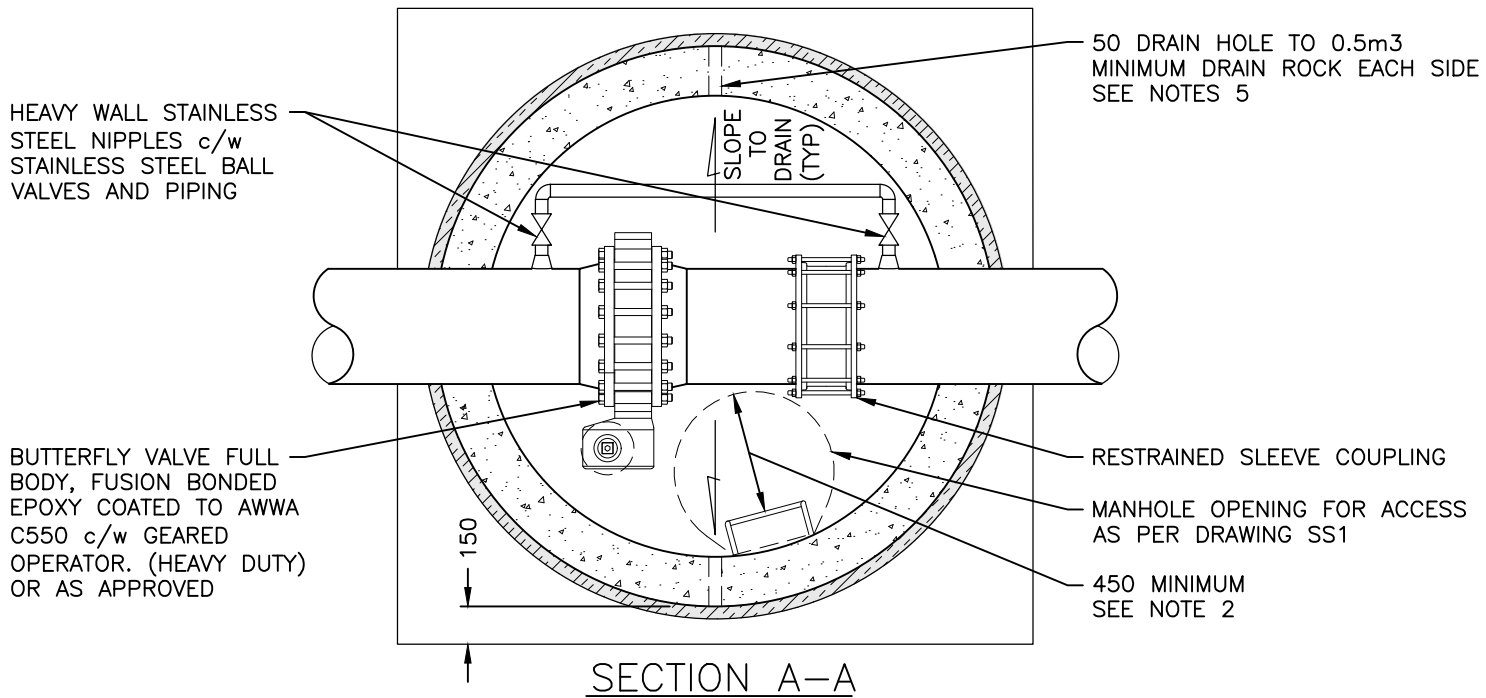


HEAVY WALL STAINLESS
STEEL NIPPLES c/w
STAINLESS STEEL BALL
VALVES AND PIPING

BUTTERFLY VALVE FULL
BODY, FUSION BONDED
EPOXY COATED TO AWWA
C550 c/w GEARED
OPERATOR. (HEAVY DUTY)
OR AS APPROVED

50 DRAIN HOLE TO 0.5m³
MINIMUM DRAIN ROCK EACH SIDE
SEE NOTES 5



- NOTES:
1. PRECAST BASES APPROVED BY CONTRACT ADMINISTRATOR ARE ACCEPTABLE.
 2. ALL COMPONENTS TO MEET ALL APPLICABLE WORKSAFE BC GUIDELINES.
 3. CONCRETE TO BE MINIMUM 28 MPa, TYPE 50 OR AS SPECIFIED OTHERWISE ON CONTRACT DRAWINGS.
 4. REFER TO CONTRACT DRAWINGS, SECTION 33 11 01, 03 20 01 AND 03 30 53 FOR DETAILED SPECIFICATIONS.
 5. PROVIDE DRAIN PIPE CONNECTED TO STORM SYSTEM c/w BACKWATER VALVE AND 300x300x400 DEEP SUMP WHENEVER POSSIBLE AND AS DIRECTED BY CoK.

NOT TO SCALE

No.	DATE	REVISION DESCRIPTION	BY	APP
5	NOV2024	REVIEWED AND UPDATED 2024	VHN	JDh
4	APR2022	REVIEWED AND UPDATED 2022	IP	JDh
3	JAN2019	REVIEWED AND UPDATED 2019	DAR	JDh

BUTTERFLY VALVE CHAMBER



REV. No. 5
DWG. No. SW11