



City of Kamloops

# CWRP Appendix E – In- Report maps

2025



## Appendix E In-Report Maps

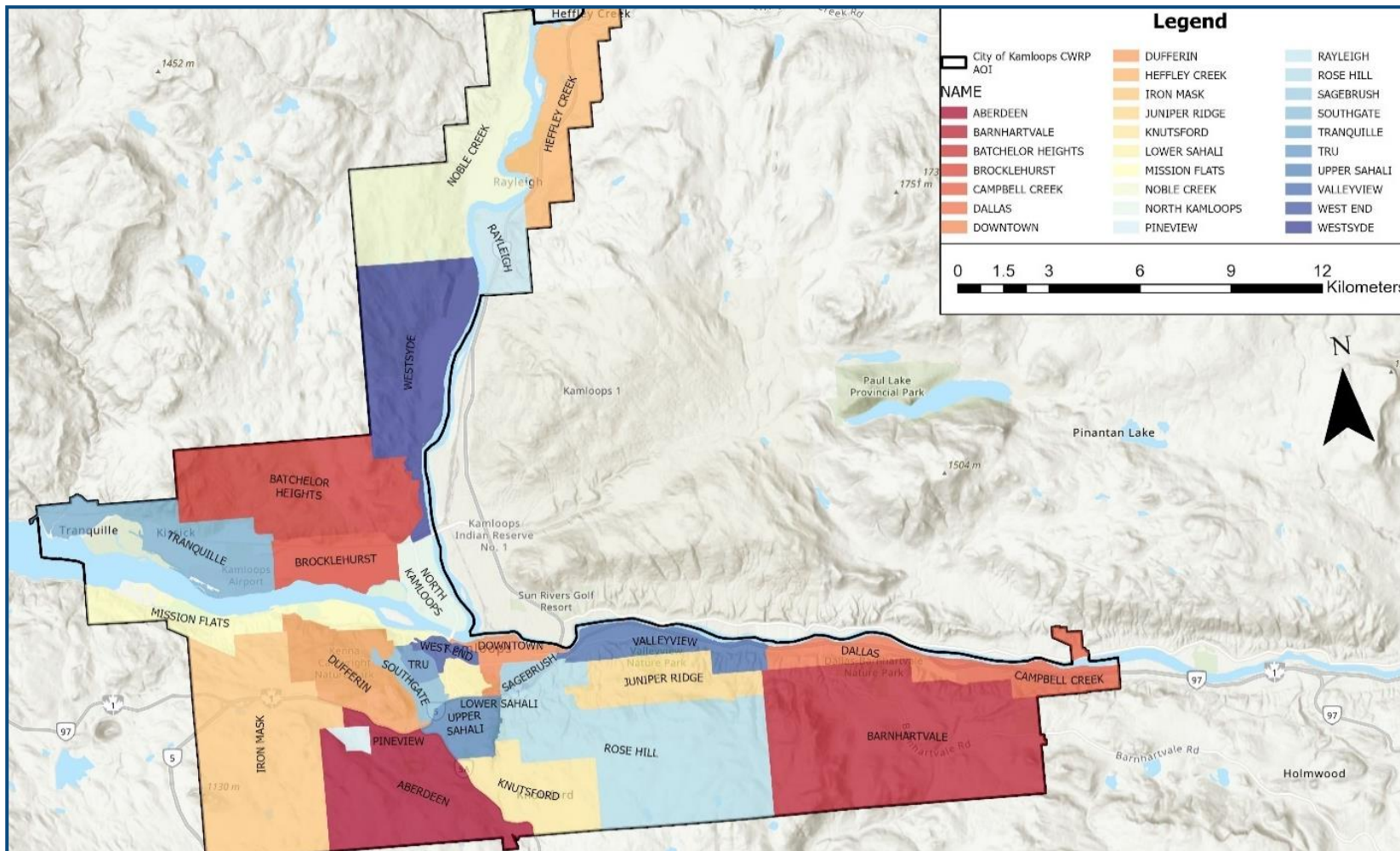


Figure 1. Map of the neighbourhoods within the City of Kamloops.

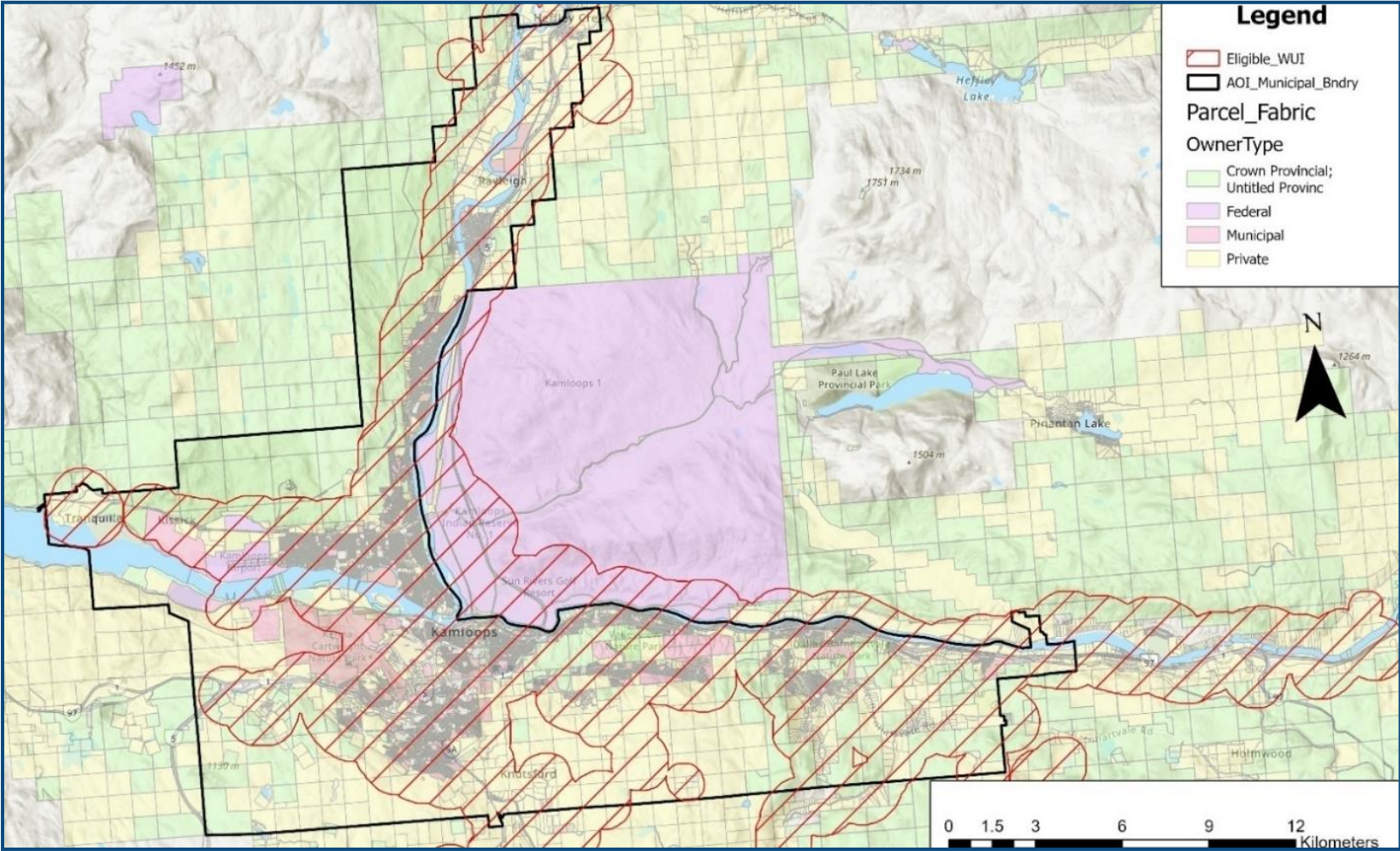


Figure 2. The City of Kamloops Area of Interest and Eligible 1 km Wildland Urban Interface map.

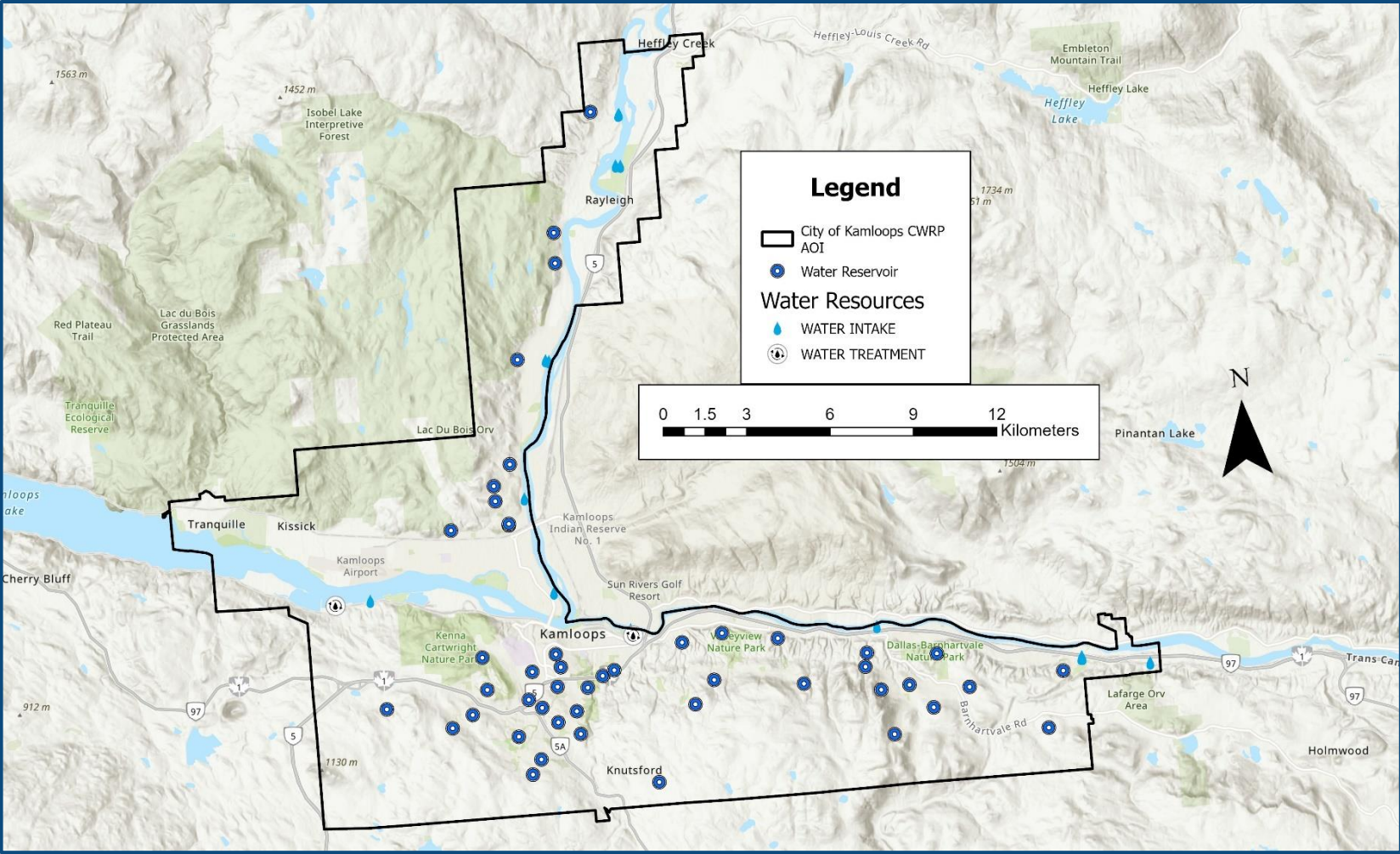


Figure 3. Map of critical water infrastructure and resources within the City of Kamloops

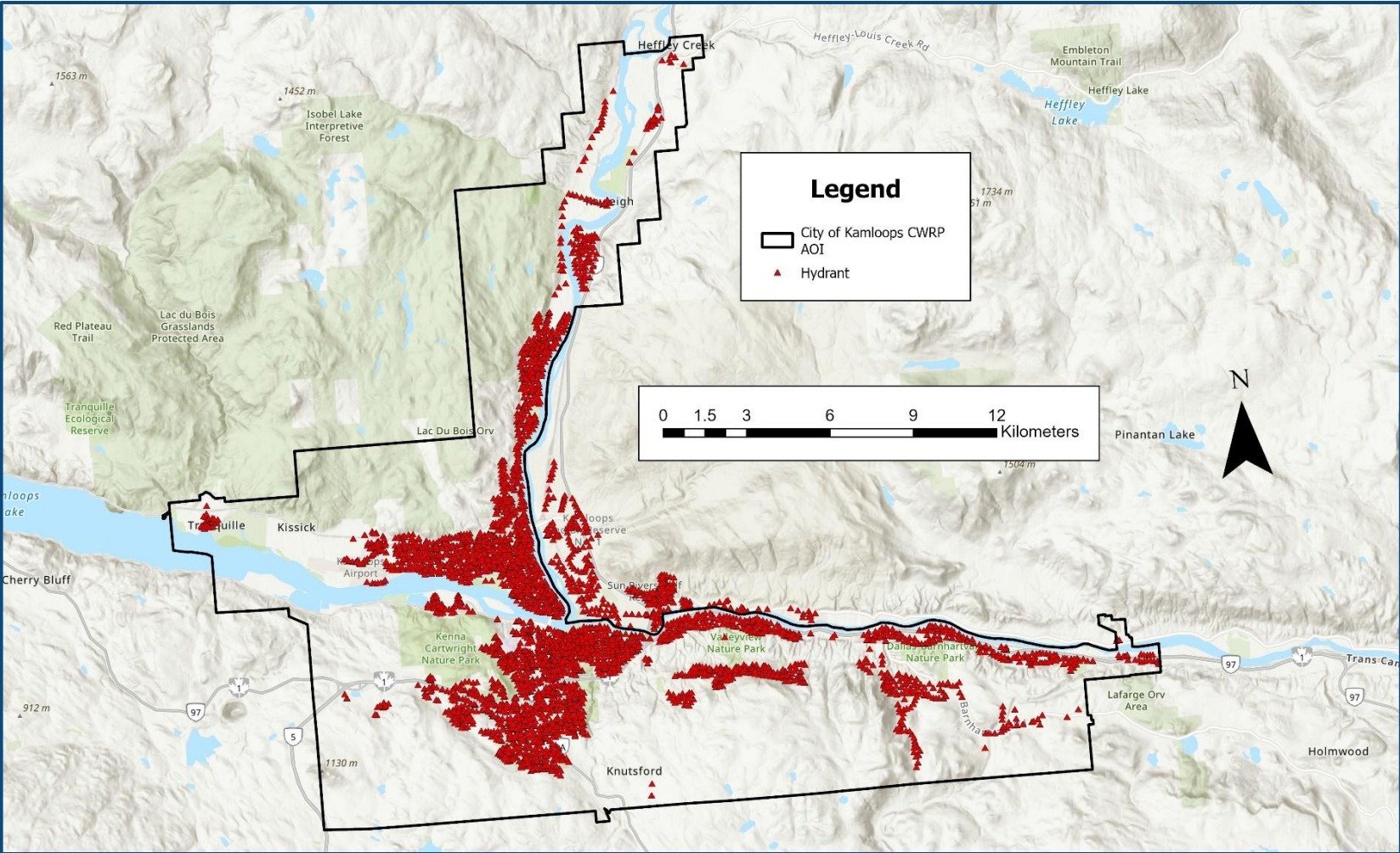


Figure 4. Map of fire hydrant location around the City of Kamloops.

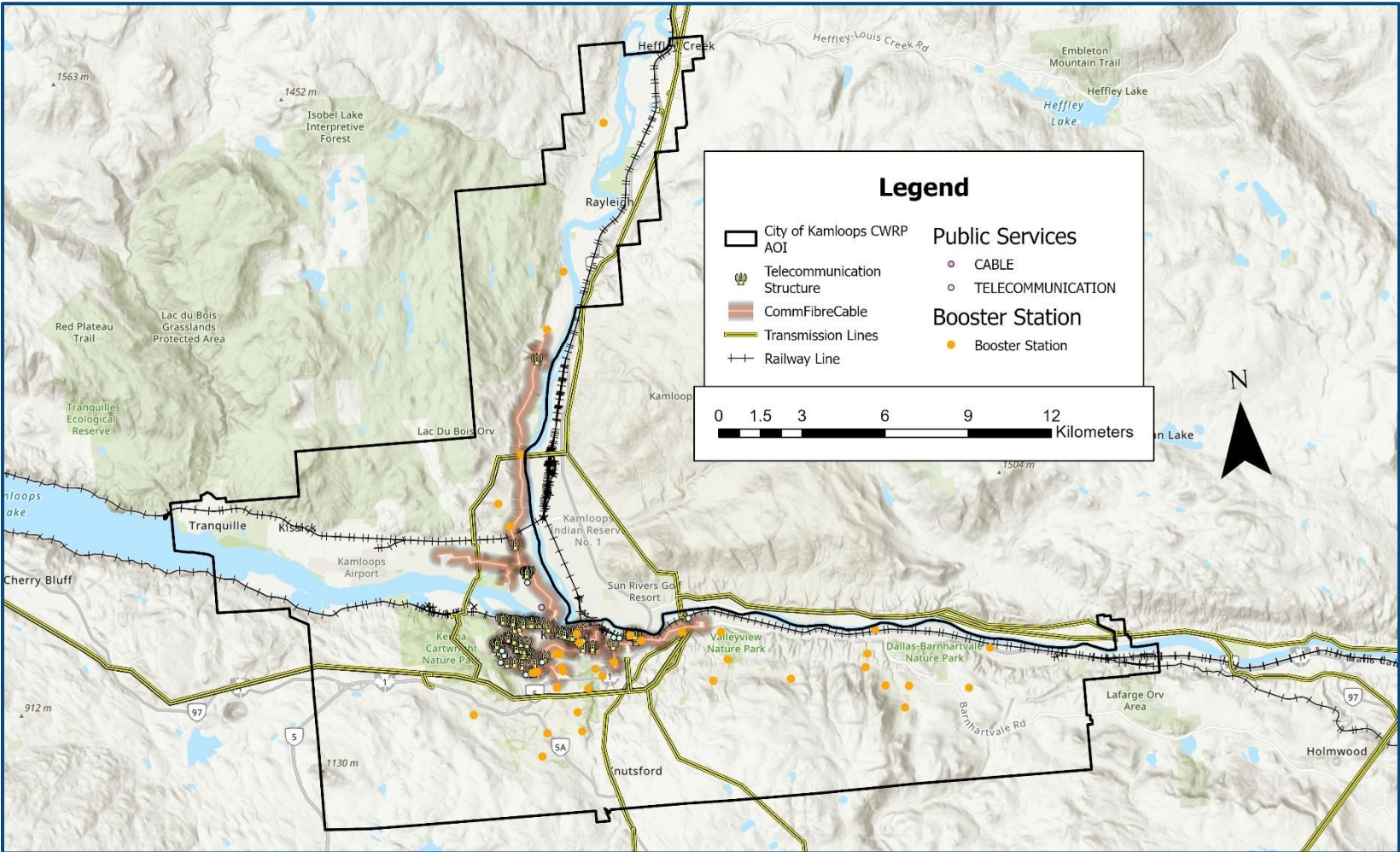


Figure 5. Map of critical electrical and communication infrastructure within the City of Kamloops.

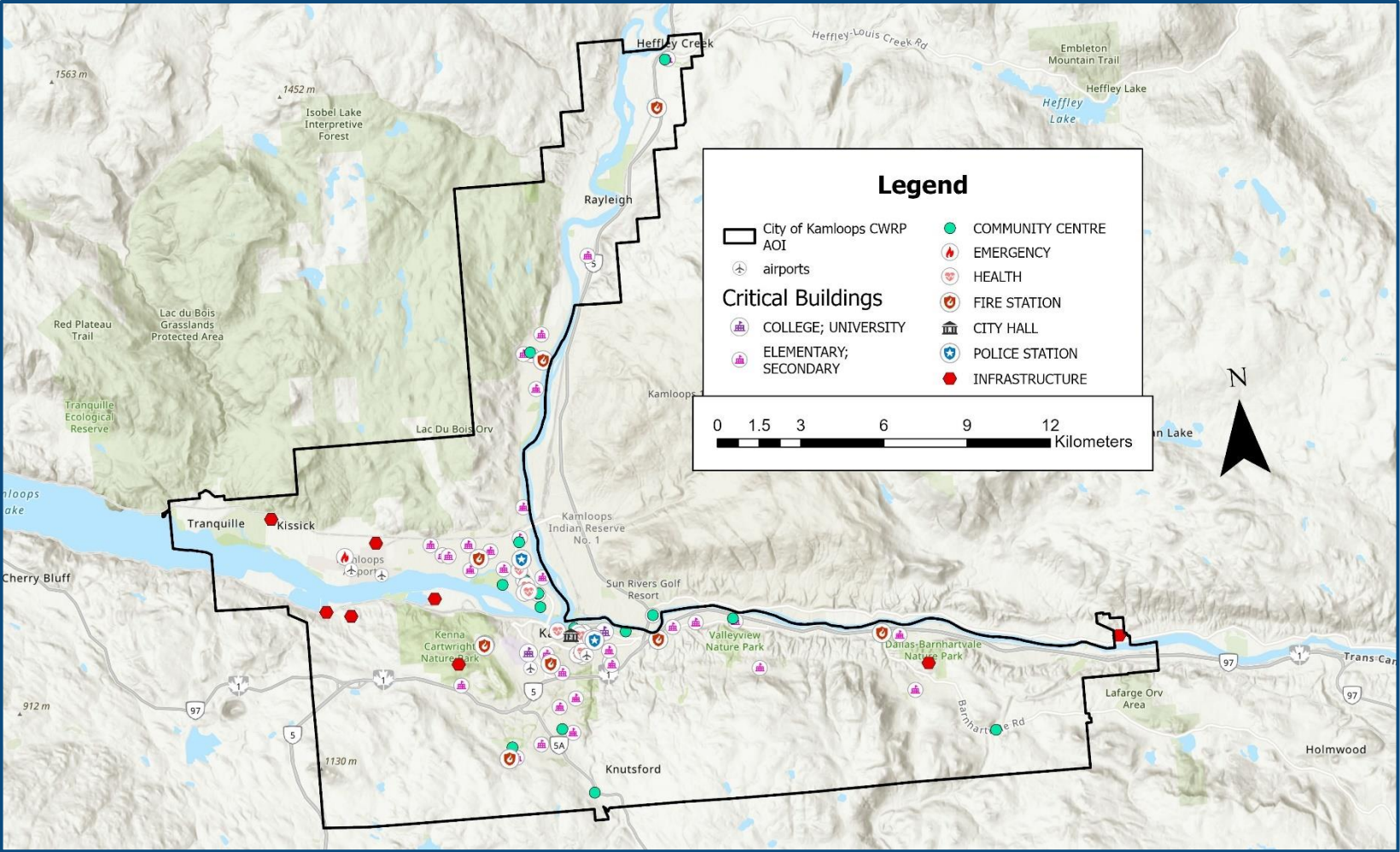


Figure 6. Map of critical buildings and structures within the City of Kamloops.

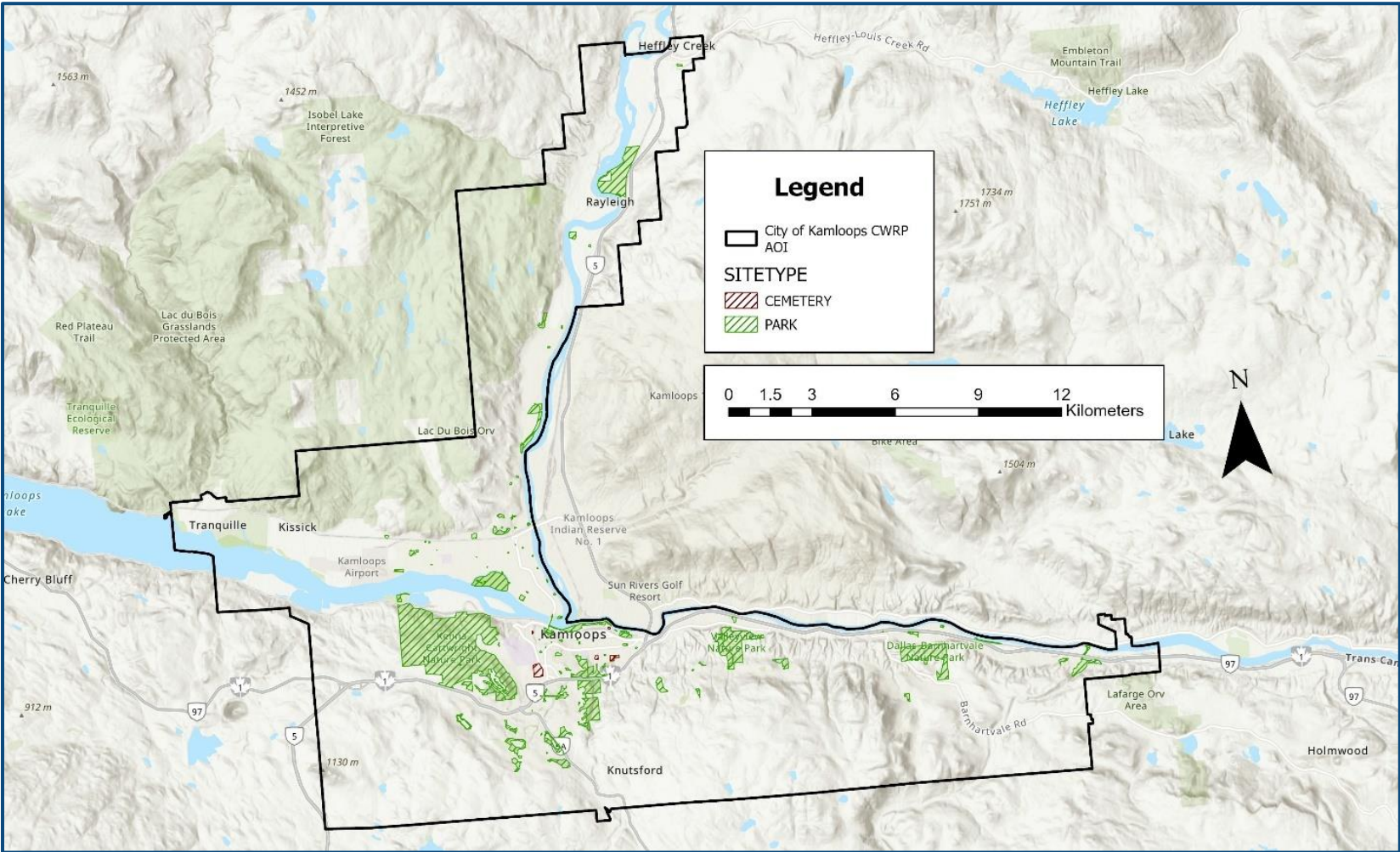


Figure 7. Map of City of Kamloops Green Spaces.

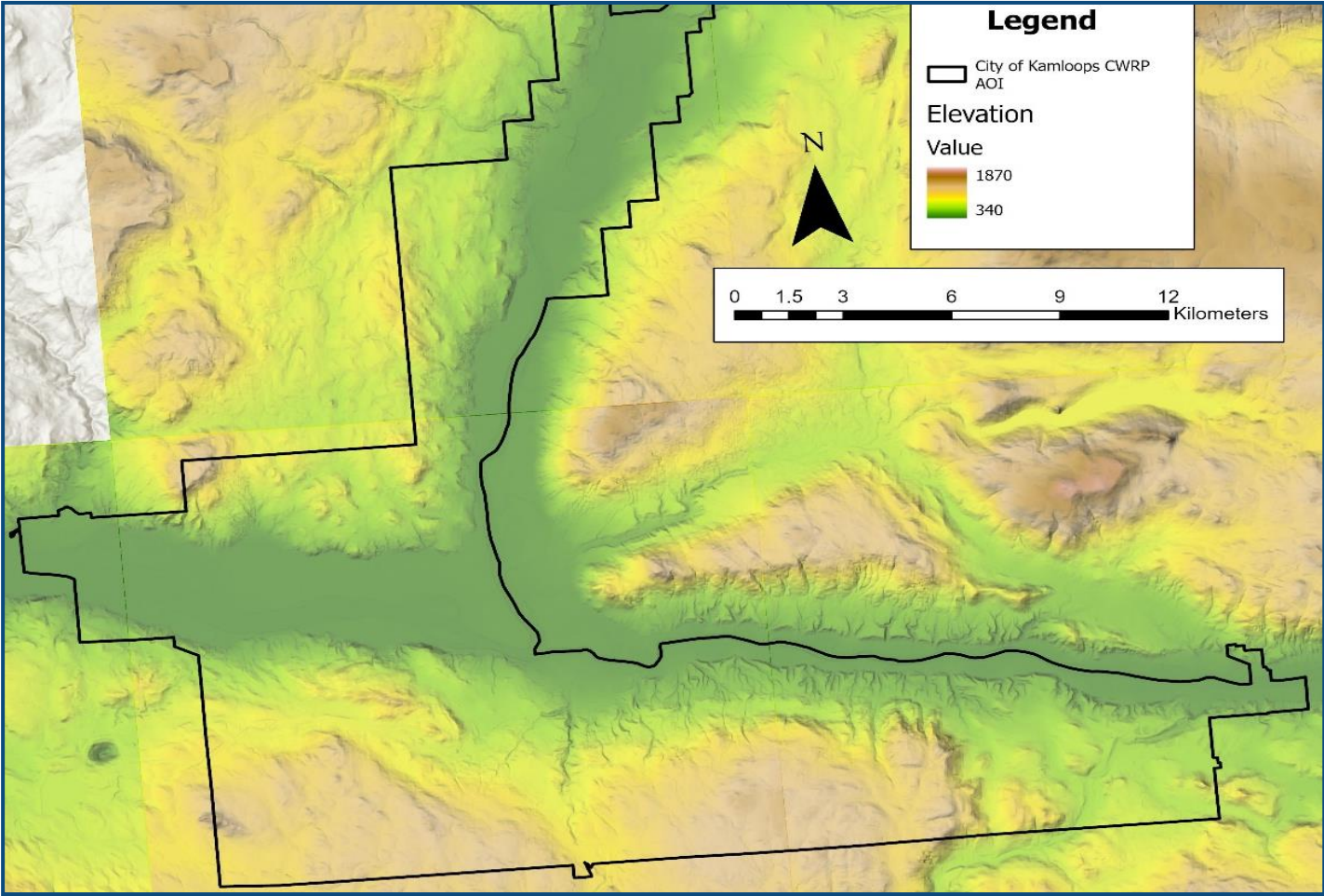


Figure 9. Digital Elevation Map (DEM) of the City of Kamloops Area of Interest.

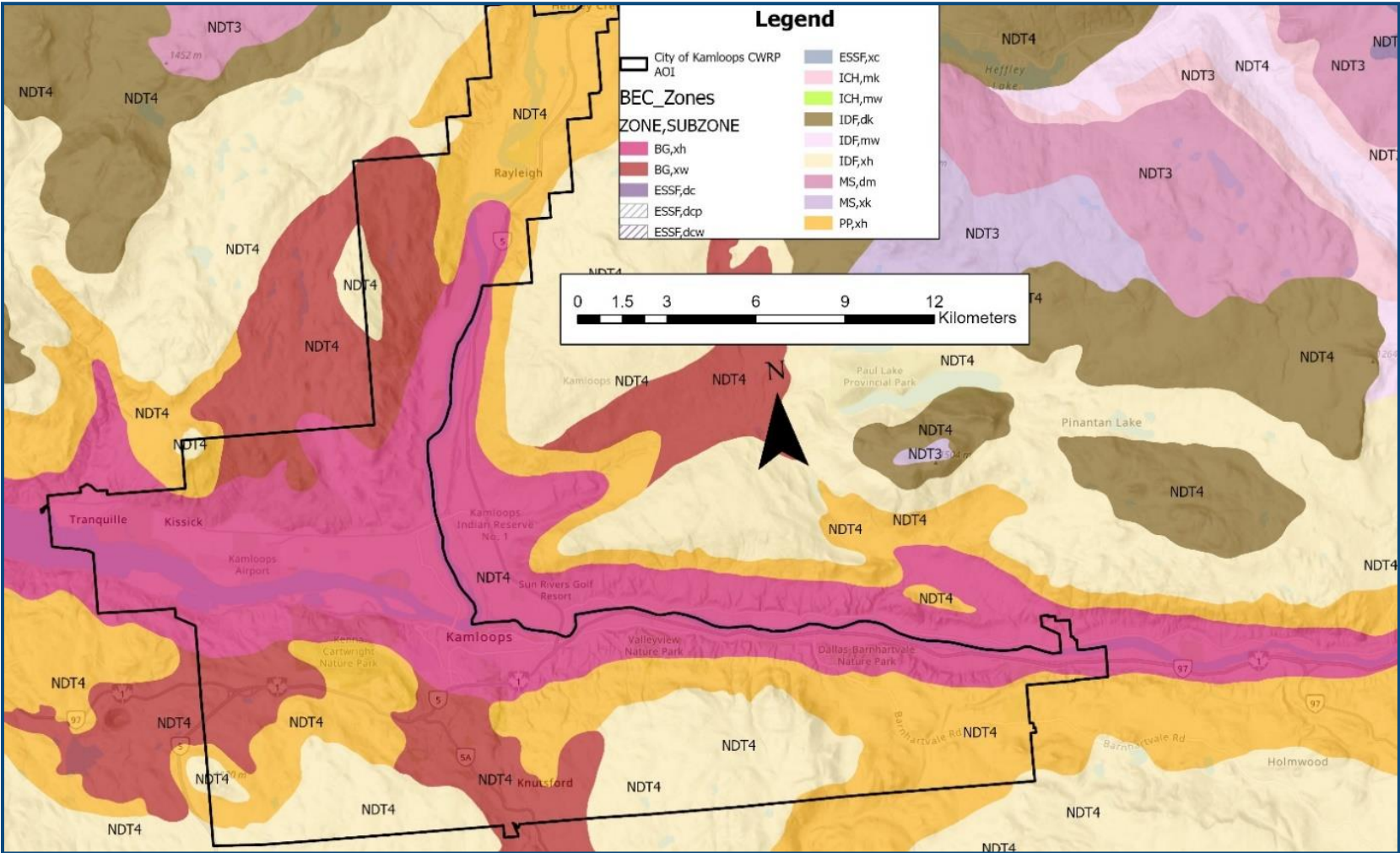


Figure 10. Biogeoclimatic (BEC) Zones and their associated Natural Disturbance Types (NDT).

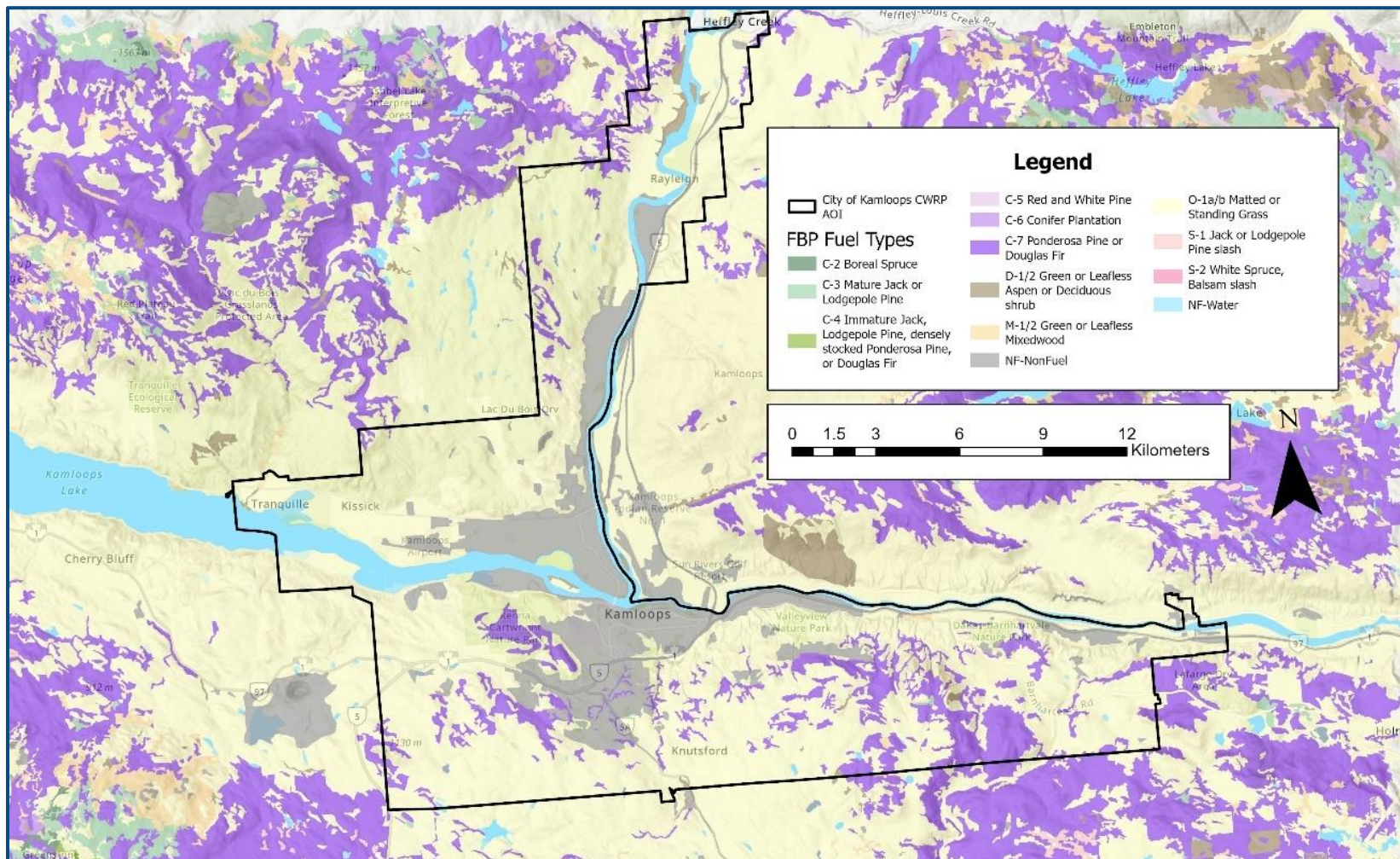


Figure 11. FBP Fuel Type map for the City of Kamloops.

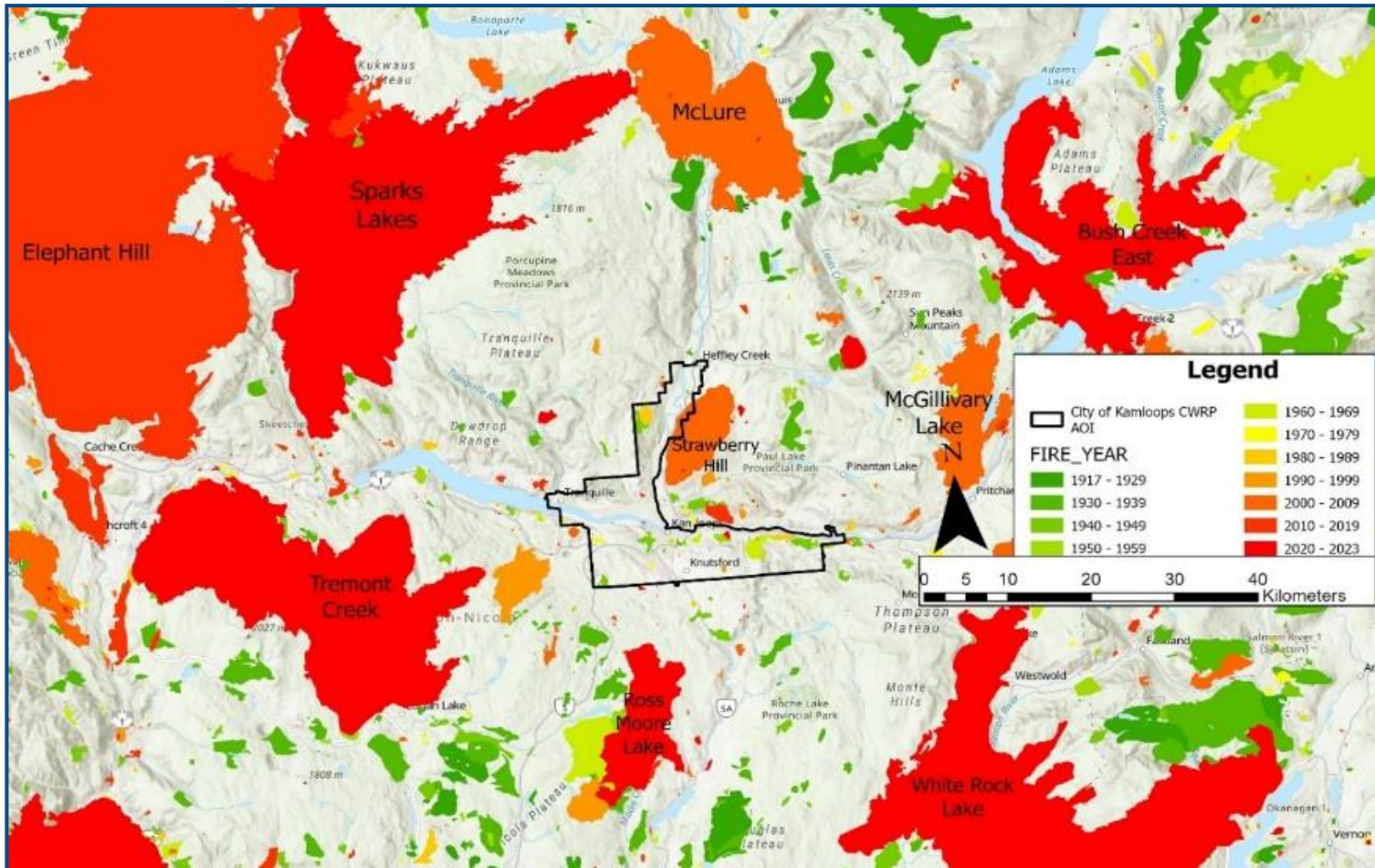


Figure 13. Historical fires that have occurred within and around the City of Kamloops since 1917. The larger fires occurring within 50 km around the city include Ross Moore Lake, Bush Creek East, White Rock Lake, Tremont Creek, Elephant Hill, Sparks Lake, McLure, Strawberry Hill, and McGillivray Lake wildfires.

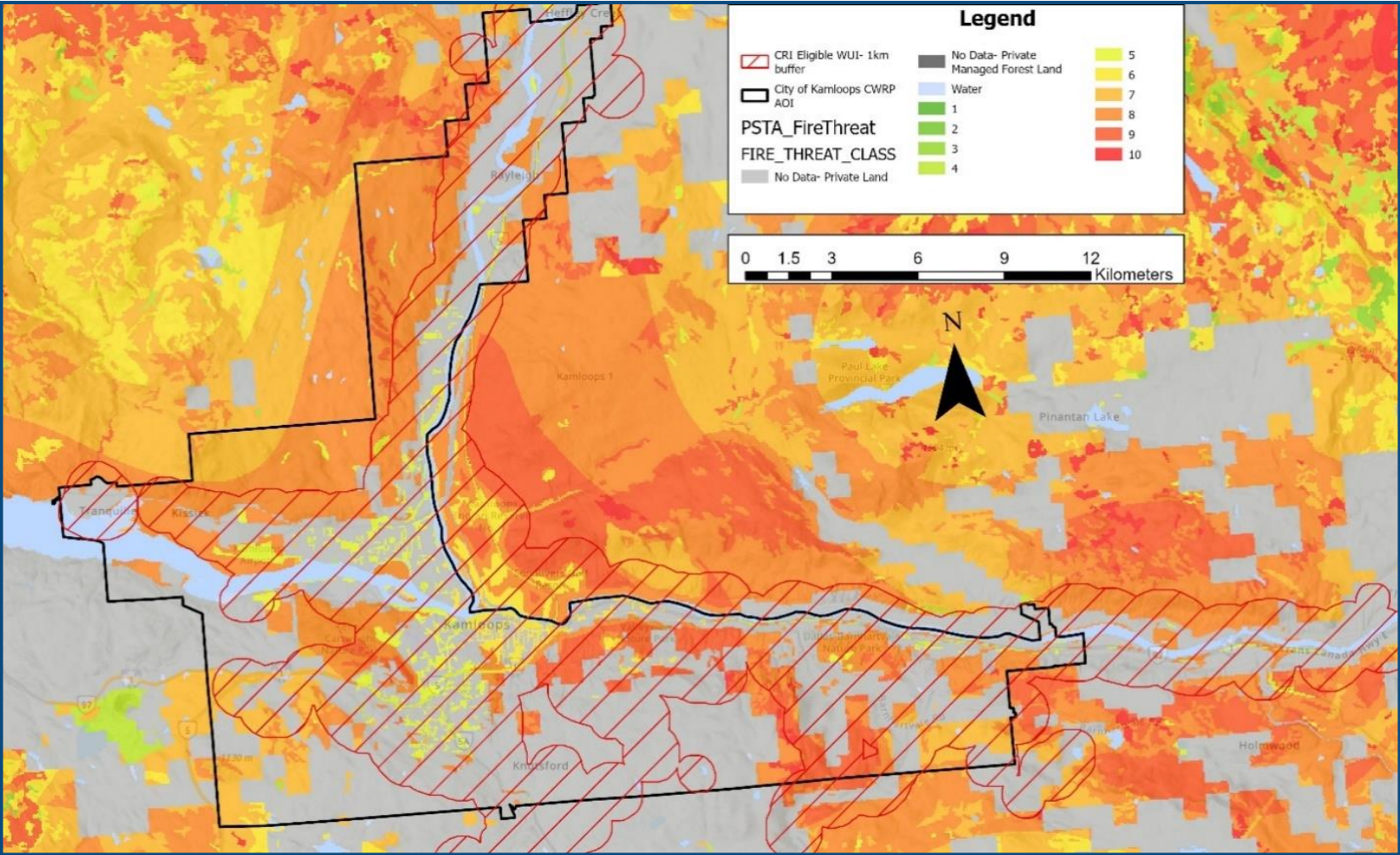


Figure 16. PSTA Fire Threat class for the City of Kamloops.