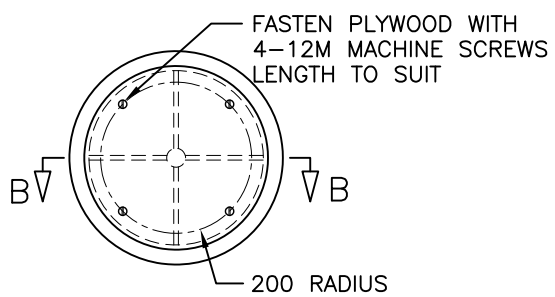
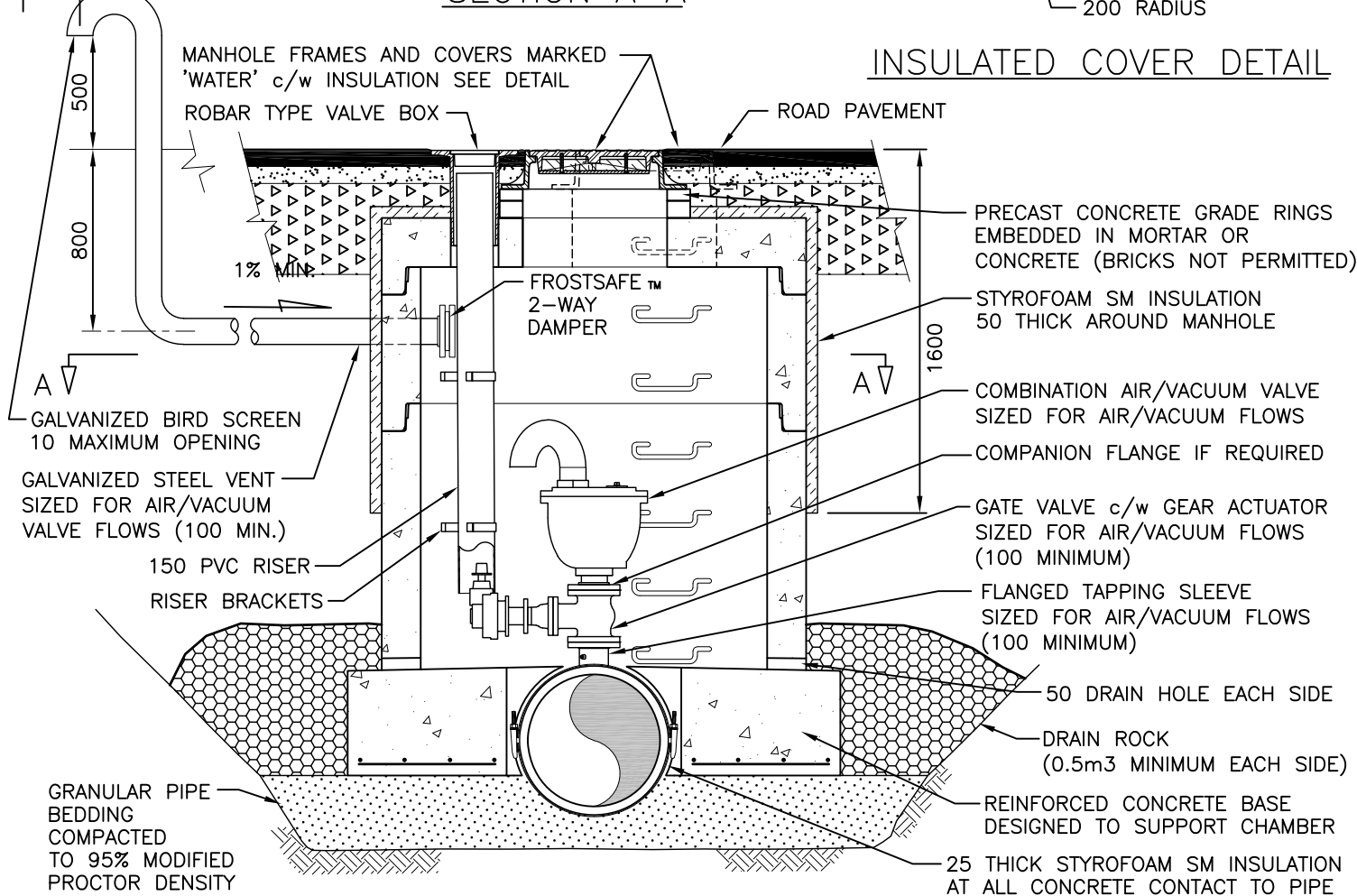


SECTION B-B



INSULATED COVER DETAIL



- NOTES:
1. CONCRETE TO BE MINIMUM 28 MPa, TYPE 50 OR SPECIFIED OTHERWISE ON CONTRACT DRAWINGS.
  2. ALL COMPONENTS TO MEET ALL APPLICABLE WORKSAFE BC GUIDELINES.
  3. REFER TO CONTRACT DRAWINGS, SECTION 33 11 01, 03 20 01, AND 03 30 53 FOR DETAILED SPECIFICATIONS.

NOT TO SCALE

No.	DATE	REVISION DESCRIPTION	BY	APP
4	MAR2022	REVIEWED AND UPDATED 2022	IP	JDh
3	JAN2019	REVIEWED AND UPDATED 2019	DAR	JDh

## AIR RELEASE VALVE CHAMBER



Canada's Tournament Capital

DWG. No. SW6/SW7  
REV. 4