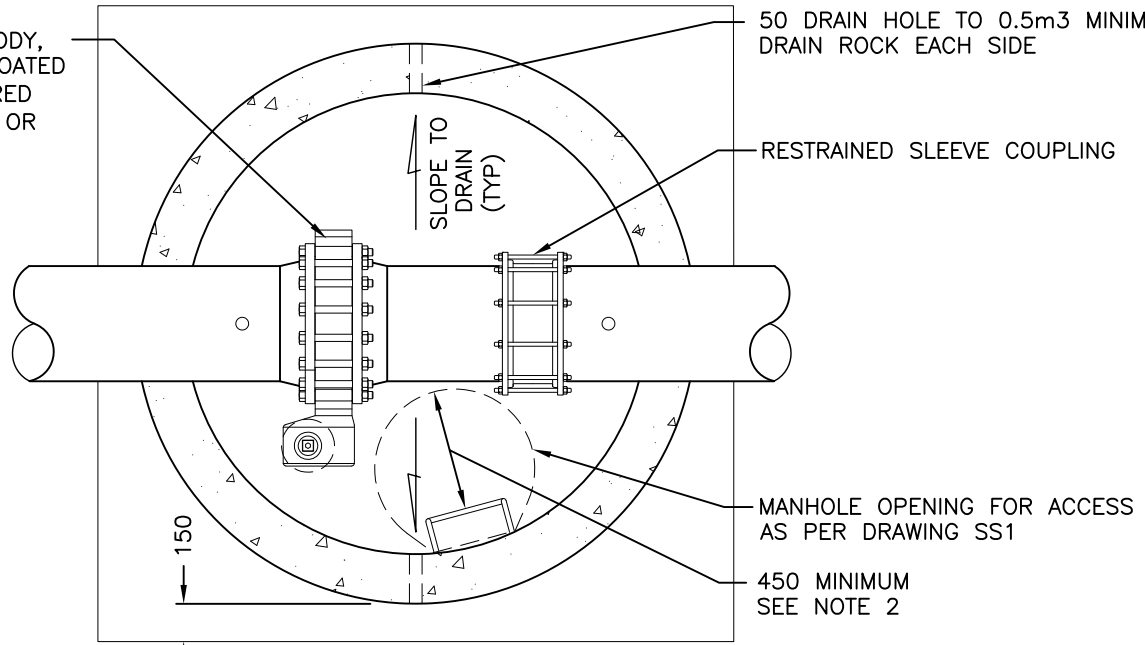


BUTTERFLY VALVE FULL BODY, FUSION BONDED EPOXY COATED TO AWWA C550 c/w GEARED OPERATOR. (HEAVY DUTY) OR AS APPROVED.

50 DRAIN HOLE TO 0.5m³ MINIMUM DRAIN ROCK EACH SIDE



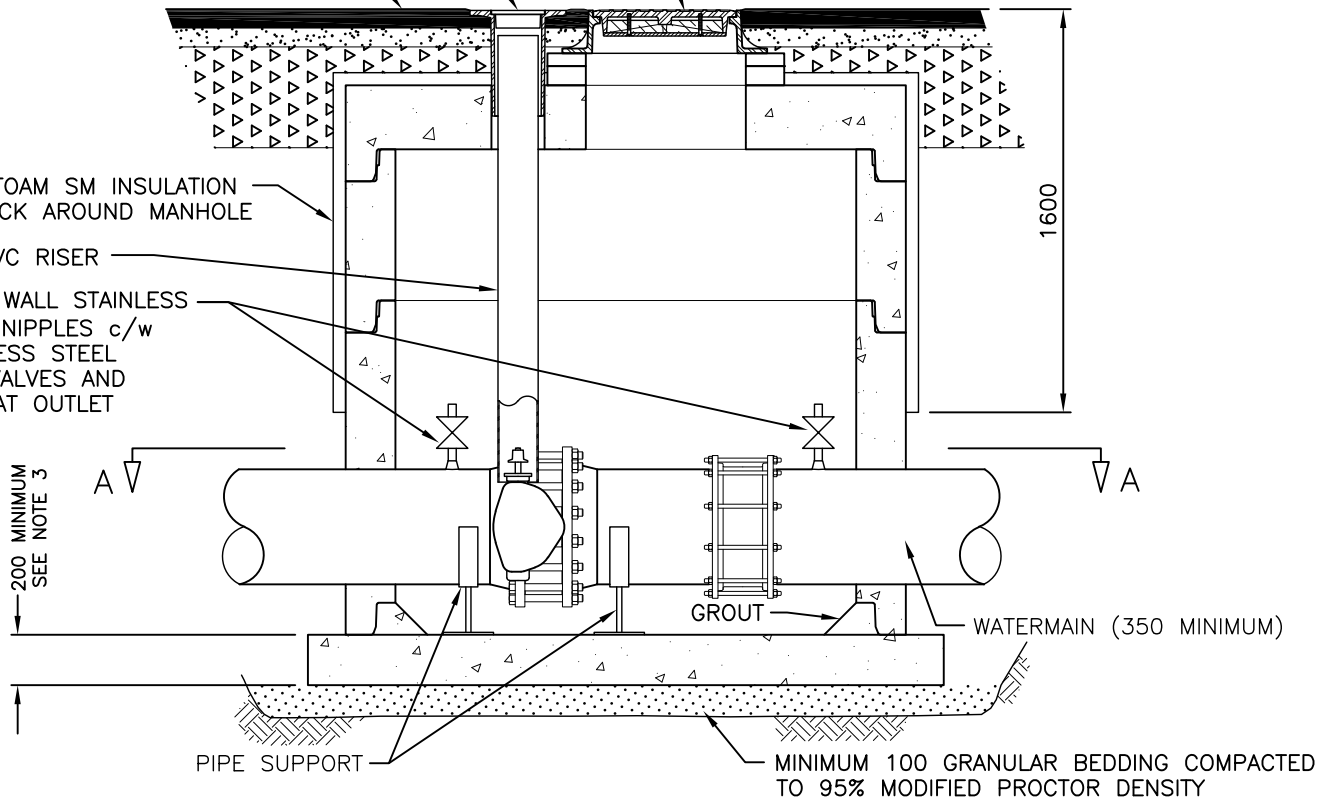
SECTION A-A

ROBAR TYPE VALVE BOX
ROAD PAVEMENT
INSULATED MANHOLE FRAME AND COVER MARKED 'WATER' AS SHOWN ON DRAWING SW6/SW7

STYROFOAM SM INSULATION 50 THICK AROUND MANHOLE

150 PVC RISER

HEAVY WALL STAINLESS STEEL NIPPLES c/w STAINLESS STEEL BALL VALVES AND PLUG AT OUTLET



- NOTES:
1. PRECAST BASES APPROVED BY CONTRACT ADMINISTRATOR ARE ACCEPTABLE.
 2. ALL COMPONENTS TO MEET ALL APPLICABLE WORKSAFE BC GUIDELINES.
 3. CONCRETE TO BE MINIMUM 28 MPa, TYPE 50 OR AS SPECIFIED OTHERWISE ON CONTRACT DRAWINGS.
 4. REFER TO CONTRACT DRAWINGS, SECTION 33 11 01, 03 20 01 AND 03 30 53 FOR DETAILED SPECIFICATIONS.

NOT TO SCALE

BUTTERFLY VALVE CHAMBER



Canada's Tournament Capital

REV. DWG. No. SW11 4

No.	DATE	REVISION DESCRIPTION	BY	APP
4	APR2022	REVIEWED AND UPDATED 2022	IP	JDh
3	JAN2019	REVIEWED AND UPDATED 2019	DAR	JDh