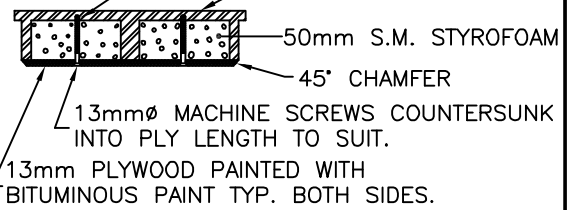




150mm
TYP.

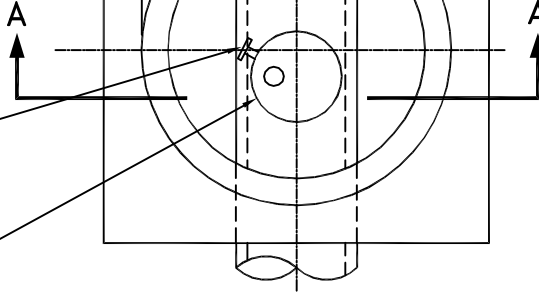
CONCRETE BASE

DRILL & TAP 13mm DEEP
TYPICAL MANHOLE LID



SECTION

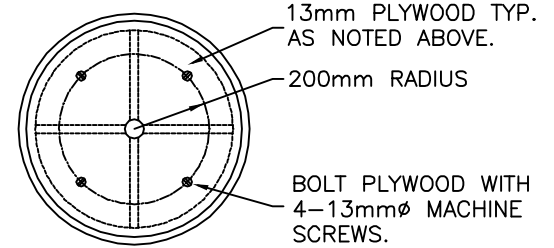
METAL RUNGS (W.C.B. APPROVED)



PLAN

BUTTERFLY VALVE

VACUUM & AIR RELIEF
VALVE TO BE OFFSET TO
ONE SIDE OF M.H.



BOTTOM OF COVER

INSUL. LID DETAIL

100mmØ GALV. STEEL
SCHED.40 PAINTED WHITE.

MANHOLE COVER AND FRAME
MARKED 'WATER' c/w INSULATED
LID, SEE DETAIL

VALVE BOX

BRICKS AS REQ'D

50mm STYROFOAM INSULATION
AROUND MANHOLE.

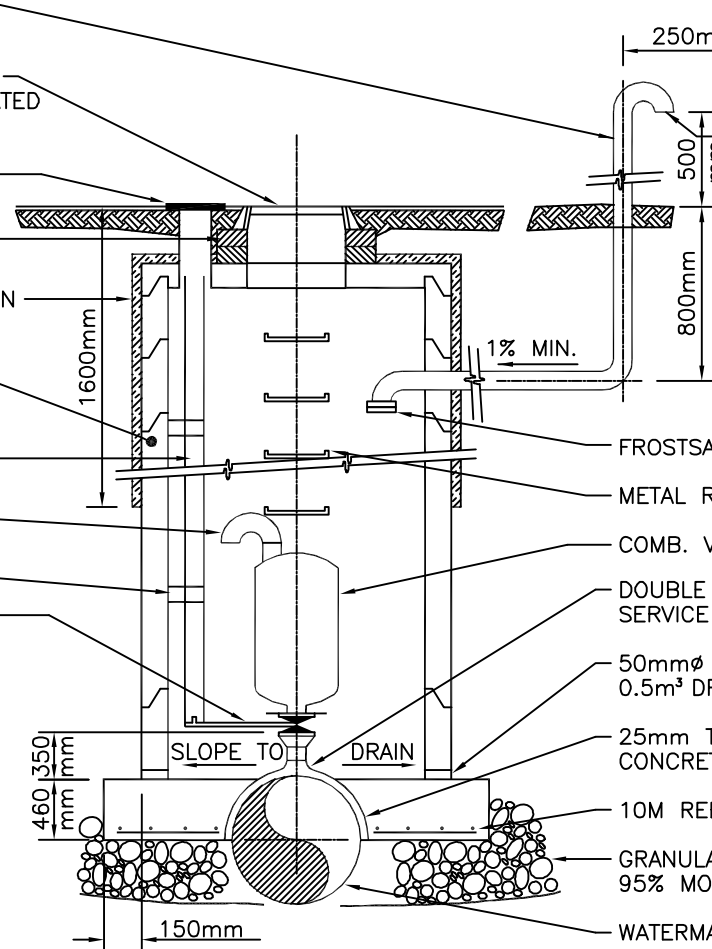
1500mmØ PRECAST BARREL

VALVE RISER PIPE (P.V.C.)

180° GALV. PIPE FITTING

PIPE BRACKETS

BUTTERFLY VALVE



GALV. BIRD SCREEN
MAX. 10mm OPENING

FROSTSAFE™ 2 WAY DAMPER

METAL RUNGS

COMB. VACUUM & AIR RELIEF VALVE

DOUBLE STRAP
SERVICE SADDLE I.P.T.

50mmØ DRAIN HOLE
0.5m³ DRAIN ROCK AT EACH DRAIN (MIN.)

25mm TH. STYROFOAM SHEET AT ALL
CONCRETE CONTACT TO PIPE.

10M REBAR AT 200mm o/c E.W.

GRANULAR PIPE BEDDING COMPACTED TO
95% MODIFIED PROCTOR DENSITY

WATERMAIN

SECTION A-A

NOTES:

1. REFER TO CONTRACT DRAWINGS AND SECTION 33 11 01, 33 30 01, 03 20 01, AND 03 30 53. FOR DETAILED SPECIFICATIONS

**AIR RELEASE
VALVE CHAMBER**

CITY OF KAMLOOPS

NO.	DATE	REVISION	DESCRIPTION	BY	APP
2	FEB 11	LID NOTES, PLATINUM UPDATE		DAR	GC
1	04/08	MH LID, DAMPER		JD	DM

DWN. BY: B.LEUNG

CHK'D BY: D.SAYERS

SCALE: N.T.S.

DATE: 97/07/10

DWG. NO.: SW6/SW7

REV.: 2